

99/15

FILED
RECEIVED

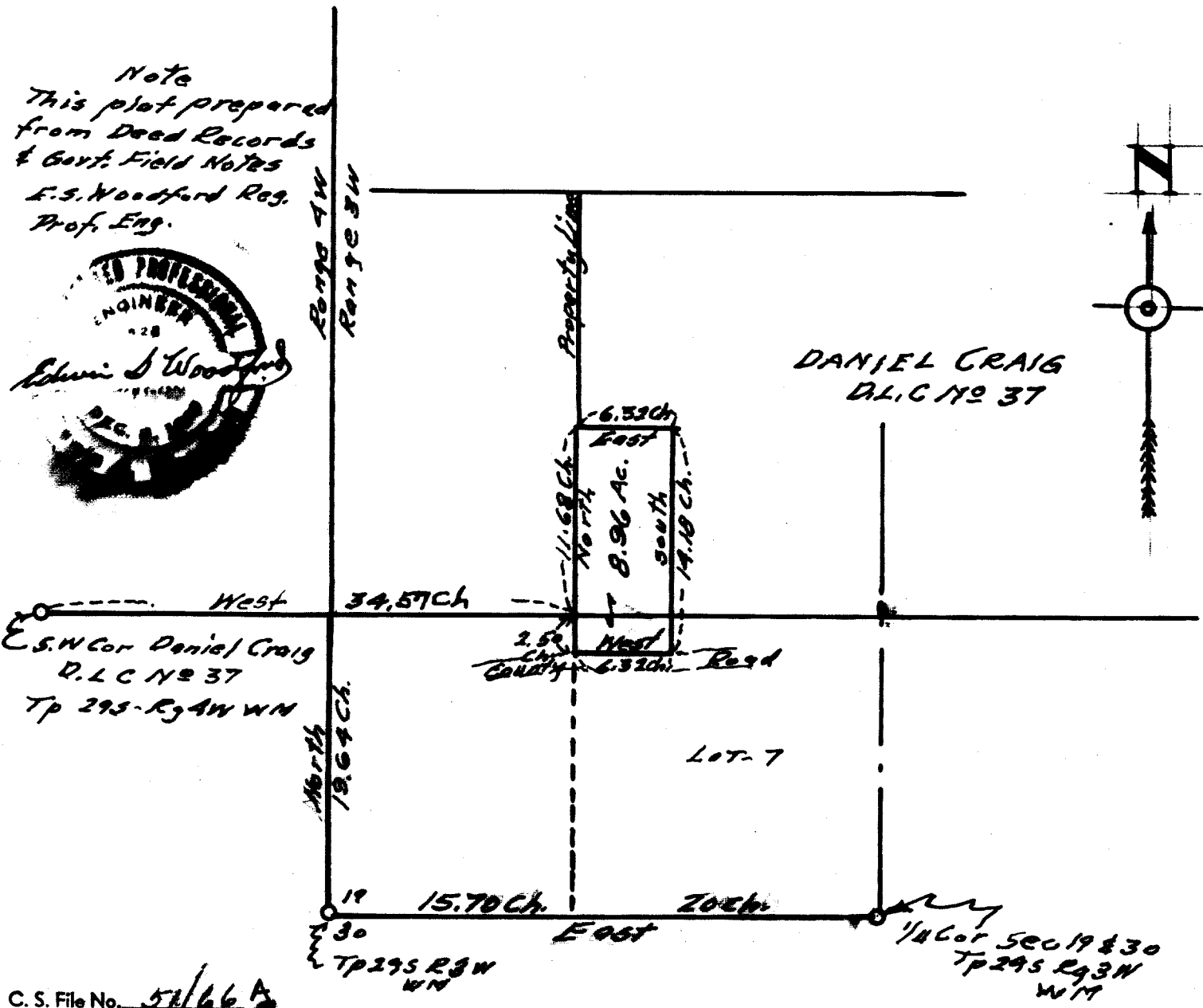
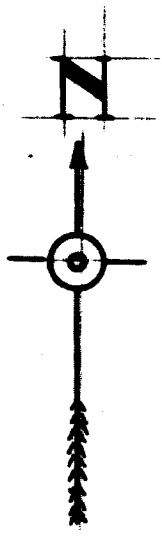
FEB 3 1960

COUNTY SURVEYOR
DOUGLAS COUNTY, ORE.

MAP
SHOWING LAND RETAINED
BY
T.A. LASATER
Scale - 1" = 20 Ch. Jan. 1960.

NOT TO BE REMOVED FROM OFFICE

Note
This plot prepared
from Deed Records
& Govt. Field Notes
E.S. Woodford Reg.
Prof. Eng.



C. S. File No. 51/66A

29/4

Descriptive Cassette

Begin @ pt on The South line of Daniel Craig
D. L. C. 37 Tp 29S - Rg 4W & ~~#37 in Tp 29S Rg 3W~~
from which point the SW Cor of sd. D. L. C. # 37
bears West 36.57 chs.

This point being also the North West corner of
Lot 7 Sec 19 Tp 29S R 3W 1/4 NW 1/4.

Thence North along the West property
line of the lands described in Vol 161 pg 505
dead records of Douglas Co Oregon on file
in the county clerk's office at Roseburg Ore
11.68 chains to a point.

Thence East 6.32 chains to a point.

Thence South & parallel with the West
property line of lands described in said
Vol. 161 pg 505 dead records of Douglas Co. Ore.
14.18 ch to a point on the North Right of
Way line of the Co. Road.

Thence West along said Right of Way line
6.32 ch to a point on the West line of lot
7 Sec 19 Tp 29S R 3W 1/4 NW 1/4.

Thence North along said West line of
lot 7 - 2.50 ch to the place of beginning
and containing 8.96 acres ±