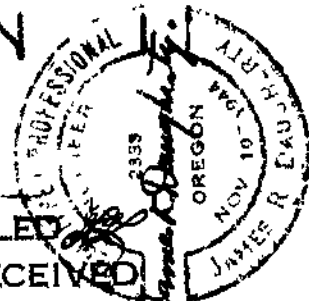


PRITCHETT PARCEL SEC. 21-T285-R6W-W.M. WINSTON

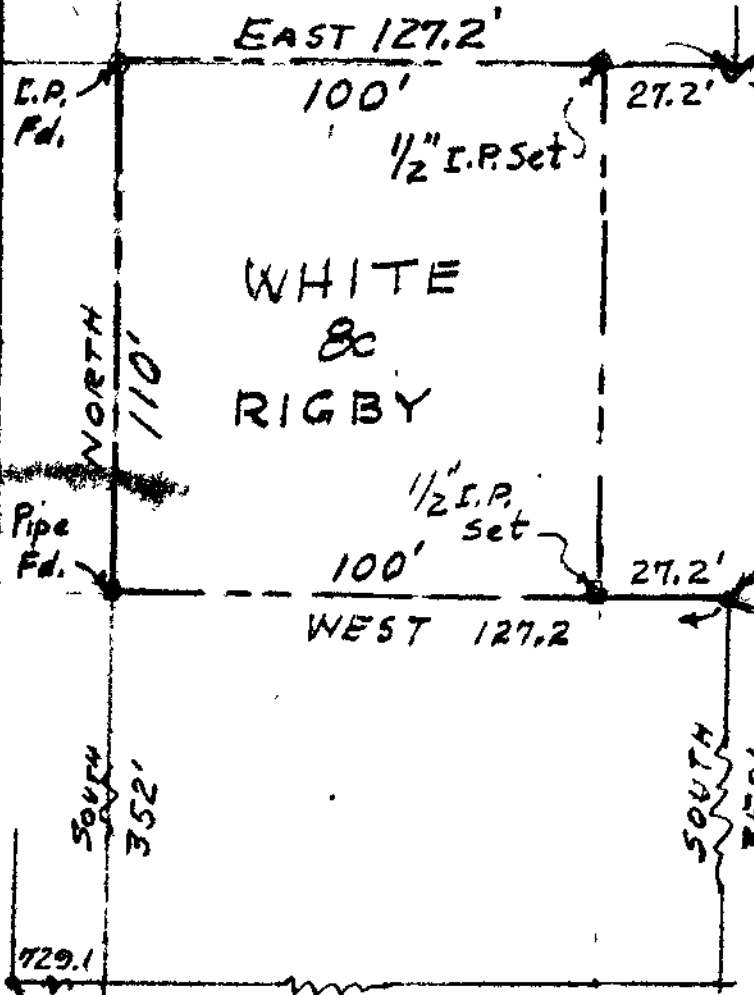


GLENN

COUNTY SURVEYORS FILE DATA
DO NOT REMOVE FROM OFFICE

FILED RECEIVED
NOV 12 1959

COUNTY SURVEYOR
DOUGLAS COUNTY, ORE.



PRITCHETT

Vol. 178

No. 105760

CHAPMAN # 252292

SKETCHED BY

JAMES R. DAUGHERTY
CIVIL-SANITARY ENGINEER
WINSTON-ORE.

SCALE 1" = 40'

Sept 30, 59.

