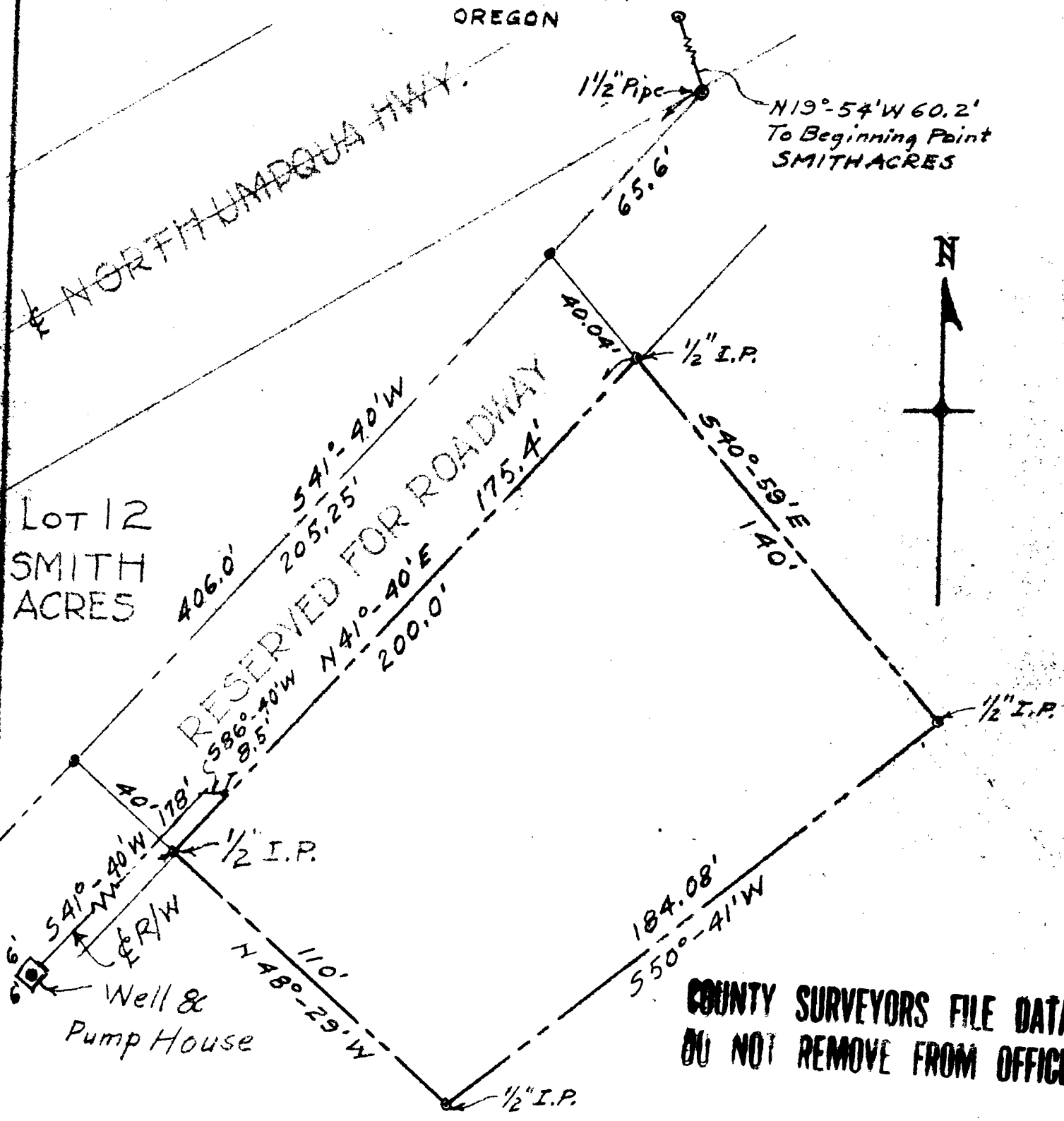


FRANK P. SINNOTT PARCEL - SECTION 17 - T26S - R3W - W.M.
 DOUGLAS COUNTY
 OREGON

~~NORTH UADQUA HWY.~~

Lot 12
 SMITH
 ACRES

RESERVED FOR ROADWAY



COUNTY SURVEYORS FILE DATA
 DO NOT REMOVE FROM OFFICE

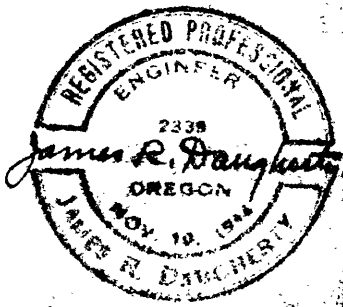
SCALE 1"=40'

SURVEYED & PLATTED BY
 JAMES R. DAUGHERTY
 CIVIL-SANITARY ENGINEER

FILED
 RECEIVED

ROSEBURG - ORE. AUG 17 1956

COUNTY SURVEYOR



Water Line
 R/w added June 1959.
 FEB. 8, 1956.

DOUGLAS COUNTY, ORE.

C.S. FILE NO. 572