

**COUNTY SURVEYORS FILE DATA
DO NOT REMOVE FROM OFFICE**

July 14, 1959

Resetting of Damaged 1/4 Corner

Section 27 Twp. 21 S., R. 8 W., W.M., Douglas County, Oregon
34

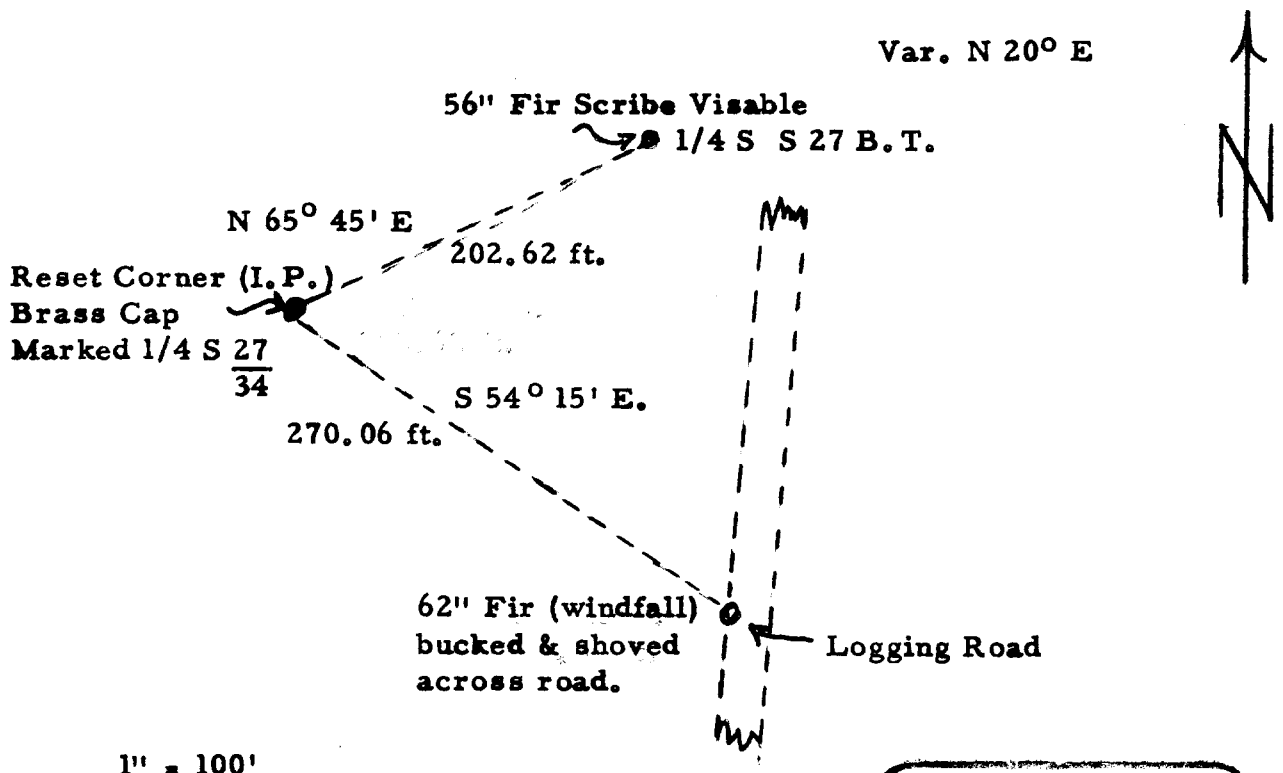
Done at the request of the Bureau of Land Management for Snellstrom Lumber Co., P. O. Box 449, Eugene, Oregon.

I found the brass capped iron pipe marked 1/4 S 27 at approximately the loca-
34
tion it was before being disturbed by tractor operations. It was pulled loose from the ground and the pipe was bent.

I obtained resurvey notes from the Bureau of Land Management as follows:

- A Fir 56", bears N 65° 45' E, 307 lks dist. Marked 1/4 S 27 B. T.
- A Fir 62", bears S 54-1/4° E, 410 lks dist. Marked 1/4 S 34 B. T.

I found the 56" Fir and a hole on the edge of the road where the 62" Fir apparently used to be. It is now a windfall and has been bucked. I reset the pipe from the 56" Fir. This location tallies with the original location I remember before the logging commenced.



REGISTERED
OREGON
LAND SURVEYOR
John M. Phillips
NOV. 6, 1953
JOHN MORRISON PHILLIPS
307

FILED
RECEIVED

AUG 20 1959

COUNTY SURVEYOR
DOUGLAS COUNTY, ORE.