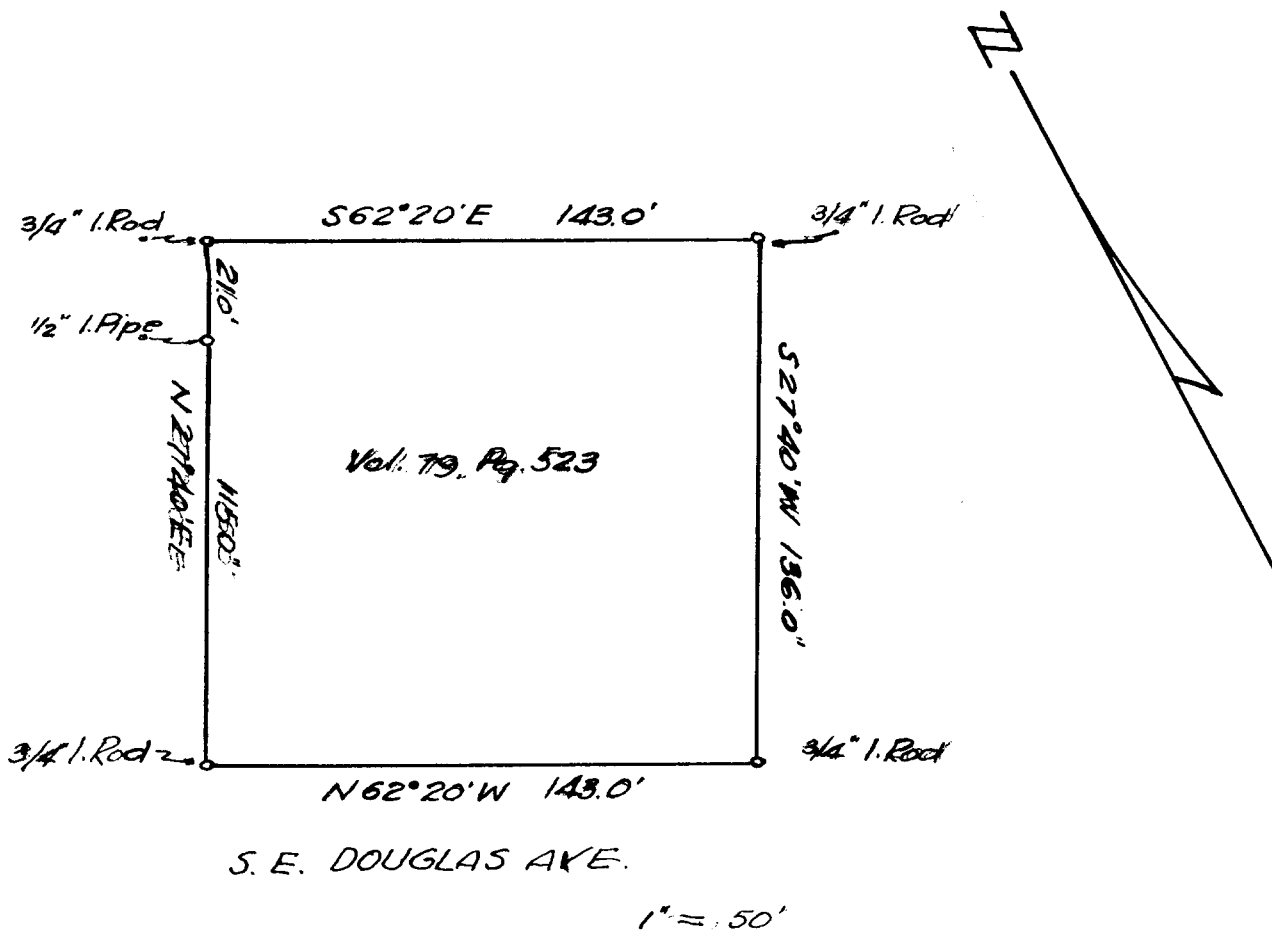


COUNTY SURVEYORS' FILE DATA  
DO NOT REMOVE FROM OFFICE

PROPERTY SURVEY  
FOR  
KATHERINE W. BAIN  
CITY OF ROSEBURG  
SEC. 19, T. 27 S., R 5 W., W. M.



I, R. H. Gee, do hereby certify that this survey was made under my supervision on August 5, 1959 and that the monuments indicated on the above plat are in place.

*R. H. Gee*

Registered Professional Engineer.



FILED  
RECEIVED

JUL 27 1960

COUNTY SURVEYOR  
DOUGLAS COUNTY, ORE.