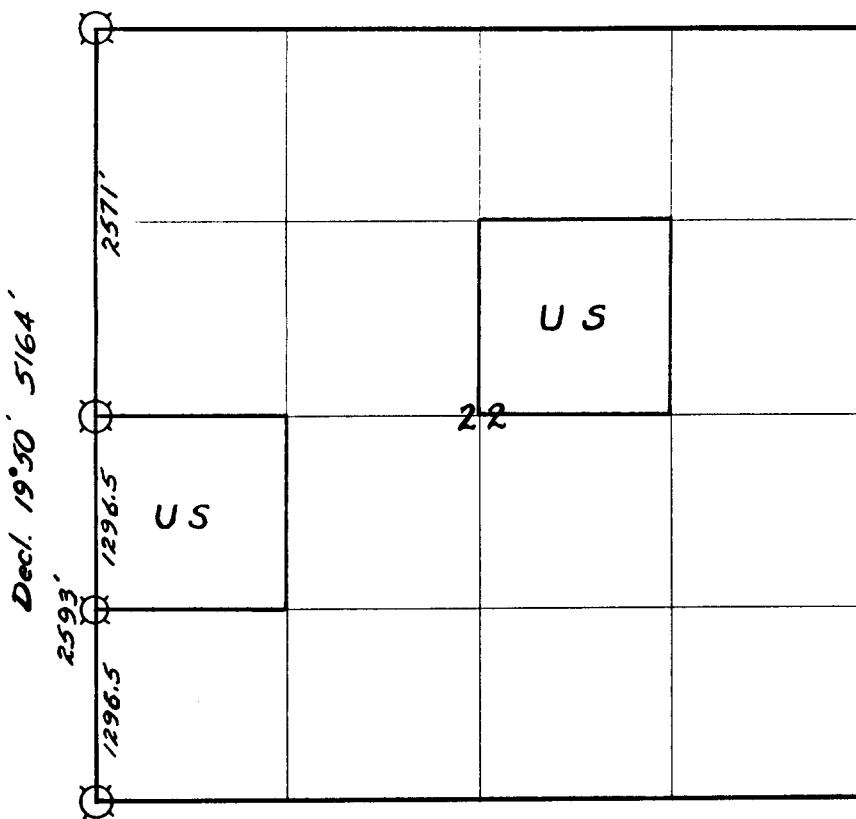


Weyerhaeuser Company

Section 22 Township 24 S Range 3 W



// // Line marked by notch cut in blaze

- Known corner
- ◻ Referenced corner

Staff compass and abney slope chain survey.

This survey was made for Weyerhaeuser Company by Glen McChesney, under the supervision of Lester E. Calder, Oregon Licensed Engineer, Reg. No. 2149

Helpers: Robert Barta (W.Co.)

Chet Sorensen (BLM)

Dates of survey April 1964 Date filed for record & where April 1964

Distribution

Douglas County Surveyor's Office

W.Co.-Spfld.-Survey File
 " " " -Land Dept. File
 B L M - Roseburg
 ✓ County Surveyor - Roseburg

Reported April 17 1964

By Robert Barta

$\frac{16}{21} | \frac{15}{22}$

Corner common to Sections 15, 16, 21 and 22-24S-3W

W. Co. Survey Record 1956

Referenced by William Miles (Plates and "W" nails only)
Declination 20°

Set ½" monel pipe beside brass cap		Found brass cap, ½" monel pipe and ½" G.I. pipe
4" Maple	N 13° E	32.0' Found
24" Fir Log	N 86° W	9.8' Found

$\frac{21}{28} | \frac{22}{27}$

Corner common to Sections 21, 22, 27 and 28-24S-3W

W. Co. Survey Record 1953

Referenced by R. Ehm (Plates and "W" nails only)
Declination 20°

Set 1½" Iron pipe from references made by Lester E. Calder in 1942. Sometime after 1942, the area shifted in a Northerly direction several feet. Calder's reference trees were outside of this area. The C. S. trees marked in 1939 were in the slide area. The cedar is dead and down, the yew is standing, but at new location, scribing visible.

50" Fir Stp.	S 41° E	32.5'	Found
50" Fir Stp.	S 53° W	57.0'	Found
20" R. Cedar	N 69° W	57.2'	Found

21 | 22

¼ Corner common to Sections 21 and 22-24S-3W

GLO Survey Record 1871

Post			Gone
6" Fir	N 25° E	11 lks	Gone
5" Fir	S 60° W	10 lks	Gone

Set 1" aluminum pipe for corner by single proportionate method.

Referenced by Glen McChesney (Weyerhaeuser method with disc #2149)
Declination 20°

22" Fir	N 87° E	22.0'
16" Fir	N 52° W	41.6'

S 1/16

South 1/16 corner for Sections 21 and 22-24S-3W

Set 1" aluminum pipe for corner by single proportionate method.
Conforms to location determined by L.E.Calder & H.A.Gould in 1942

Referenced by Glen McChesney (Weyerhaeuser method with disc #2149)

Declination 20°

22" R. Cedar	N 41° E	17.9'
48" Fir Stp.	N 40° W	29.8'

WEYERHAEUSER COMPANY CORNER REFERENCE METHOD

A "W" nail driven thru the hole in a brass disc, into a notch cut low on a tree, stamped with the Oregon registered land surveyor or professional engineer registration number. An embossed aluminum plate nailed head high on same tree with 8d aluminum nails, with distance and bearing from the "W" nail to the corner stamped on it.

