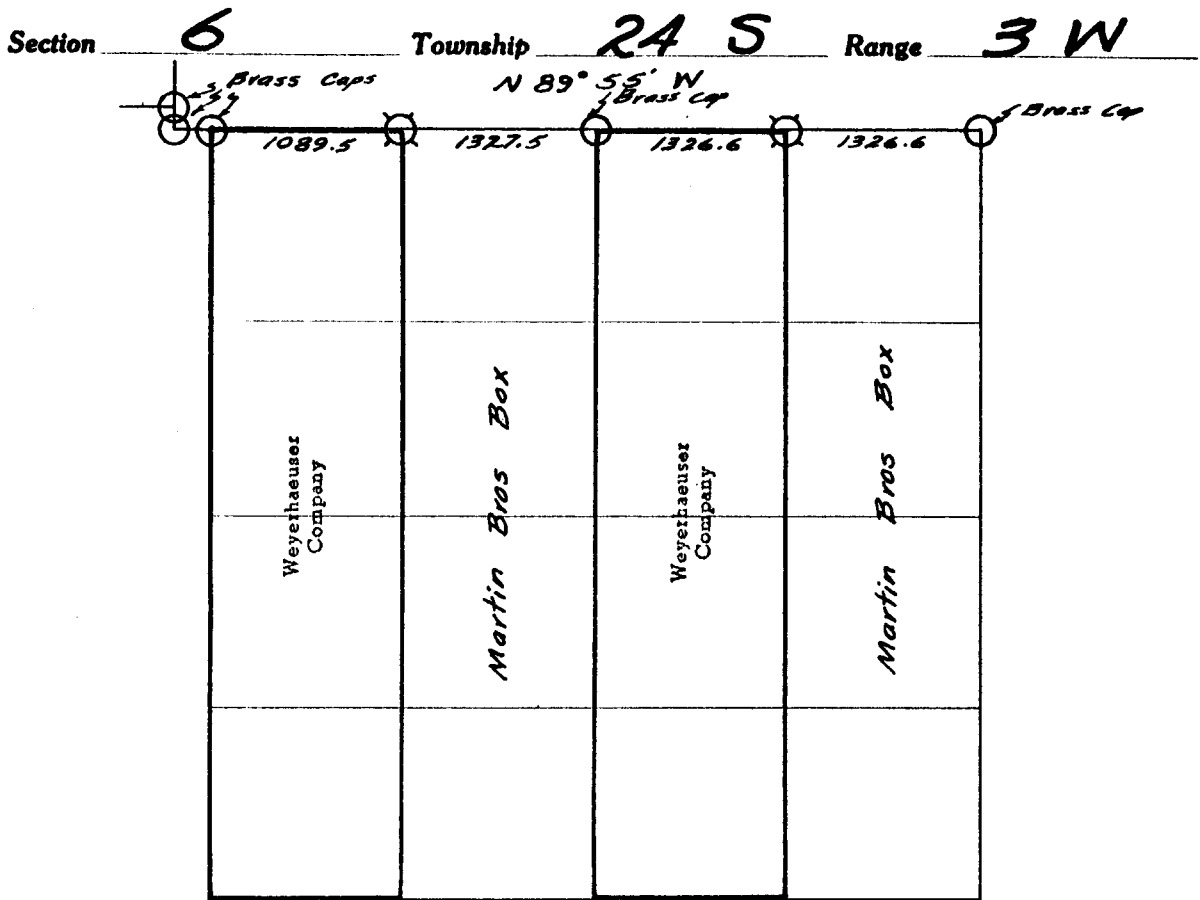


Weyerhaeuser Company



— # — # — Line marked by notch cut in blaze

○ Known corner

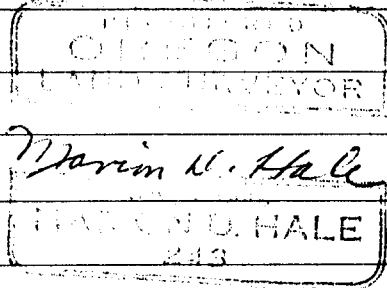
⊠ Referenced corner

Staff compass and abney slope chain survey

This survey was made for Weyerhaeuser Company by Marion D. Hale,
Licensed Oregon Land Surveyor, Registration No. 243.

Helpers: W. W. Dixon

W. Cowan



FILED
RECEIVED

JUL 5 1962

COUNTY SURVEYOR
DOUGLAS COUNTY, ORE.

Dates of survey July 1961

Date filed for record & where November 1961

Distribution

Douglas County Surveyor's Office

W.Co.-Spfld.-Survey File

" " -Land Dept.

" -Tacoma-Land Records

Martin Bros. Box-Oakland
County Surveyor-Roseburg

Reported July 19 61

By Marion D. Hale

$\frac{31}{6} \mid \frac{32}{5}$

Corner common to Sections 31-23S-3W
32-23S-3W
5-24S-3W
6-24S-3W

GLO Resurvey Record - 1950

Brass Cap			Found
18" Yew	N 38½° E	49 lks.	Now dead - scribing visible
42" Fir	S 22° E	34 lks.	Faint scribing visible
14" Yew	S 60° W	10 lks.	Pushed over slightly
7" Yew	N49 3/4° W	42 lks.	Shattered off close to ground by logging.

Referenced by Marion Hale (Plates and "W" nails only).
Declination 20° November 18, 1958

46" Fir Stp.	N 13° E	52.7'
42" Fir	S 19° E	22.6'
50" Fir	S 70° W	53.8'
44" Fir Stp.	N 26° W	46.1'

$\frac{31}{6}$

1/4 Corner common to Section 31-23S-3W
6-24S-3W

GLO Resurvey Record - 1950

Brass Cap			Found
10" Hemlock	S 16½° E	19 lks.	
10" Yew	N64 3/4° W	14 lks.	

$\frac{1}{6}$

Closing corner of Township 24S-3W
24S-4W

GLO Resurvey Record - 1950

Brass Cap			Found
9" Fir	S 48° E	65 lks.	
7" Cedar	S 43½° W	82 lks.	

E 1/16

Corner for Sections 31-23S-3W
6-24S-3W

Set Hemlock post for corner by single proportionate method according to
1950 GLO Resurvey.

Referenced by Marion Hale (Plate and "W" nail only).
Declination 20°

30" Fir	S 54° E	37.0'
---------	---------	-------

W 1/16 Corner North line Section 6-24S-3W

Set Hemlock post for corner by single proportionate method according to 1950 GLO Resurvey.

Referenced by Marion Hale (Plate and "W" nail only).
Declination 20°

36" R.Cedar S 75° E 15.0'

WEYERHAEUSER TIMBER COMPANY CORNER REFERENCE METHOD

A "W" nail driven thru the hole in a brass disc, into a notch cut low on a tree, stamped with the Oregon registered land surveyor or professional engineer registration number. An embossed aluminum plate nailed head high on same tree with 8d aluminum nails, with distance and bearing from the "W" nail to the corner stamped on it.

