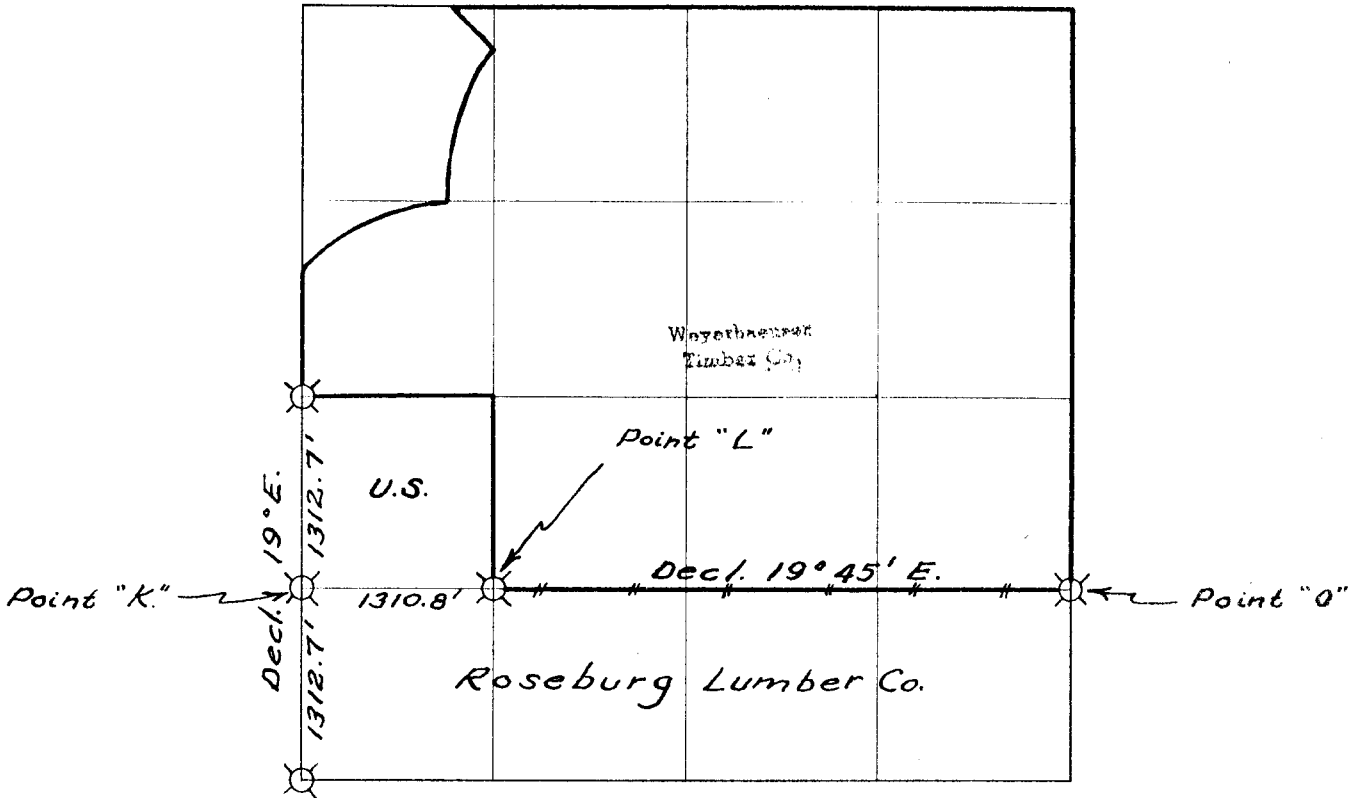


WEYERHAEUSER TIMBER COMPANY

Section 21 Township 24 S Range 3 W.



— # — # — Line marked by notch cut in blaze



Known corner



Referenced corner

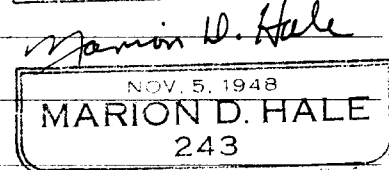
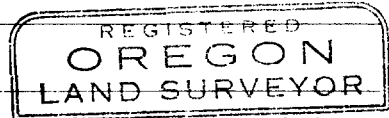
Staff compass and abney slope chain survey

This survey was made for Weyerhaeuser Timber Company by Marion D.

Hale, Registered Oregon Land Surveyor, Reg. No. 243.

Helpers: Oldroyd

P. Preppernau



Dates of survey March, 1955 Date filed for record & where July, 1959

Distribution Douglas County Surveyor's Office

WTCO - Tacoma Land Records
" - Springfield Land Dept.
" - " Survey File

Reported JULY 19 59

BLM - Roseburg
Roseburg Lbr. Co.

By _____

20 21
29 28

Corner common to Sections 20, 21, 28 and 29-24S-3W

GLO Survey Record

Brass Cap			1950 Resurvey-found
22" Fir	S 13°45' W	55 lks	1950 Resurvey-found
50" Fir	N 81°45' W	67 lks	1950 Resurvey-found
24" Cedar	S 55½° E	46 lks	1871 Survey-found

Previously referenced with plates and "W" nails by Curtis Price of Weyerhaeuser Timber Company.

S 1/16

Corner between Sections 20 and 21-24S-3W = Point "K"

Set stake for corner by single proportionate method.

Referenced by Marion Hale (Plates and "W" nails only).
Declination 20°

46" Fir Stmp	N 54° E	29.7'
28" Fir Stmp	N 13½° E	2.2'

20 21

1/4 Corner common to Sections 20 and 21-24S-3W

GLO Survey Record

Brass Cap			1950 Resurvey-found
11" Fir	N 84½° E	37 lks	1950 Resurvey-found
43" Fir	S 13°45' W	54 lks	1950 Resurvey-found

Previously referenced with Plates and "W" nails by Curtis Price of Weyerhaeuser Timber Company.

SW 1/16

Corner for Section 21-24S-3W = Point "L"

Set stake for corner at a distance of 1310.8' East of S 1/16 corner between Sections 20 and 21, using a declination of 19°45'E.

Referenced by Marion Hale (Plates and "W" nails only).
Declination 20°

16" Fir	N 42° E	40.8'
30" Fir	N 54° W	62.3'

S 1/16

Corner between Sections 21 and 22-24S-3W - Point "O"

Corner previously set and referenced by Lester Calder of Weyerhaeuser Timber Company and H. A. Gould of Smith Wood Products.

WEYERHAEUSER TIMBER COMPANY CORNER REFERENCE METHOD

A "W" nail driven thru the hole in a brass disc, into a notch cut low on a tree, stamped with the Oregon registered land surveyor or professional engineer registration number.

An embossed aluminum plate nailed head high on same tree with 8d aluminum nails, with distance and bearing from the "W" nail to the corner stamped on it.

