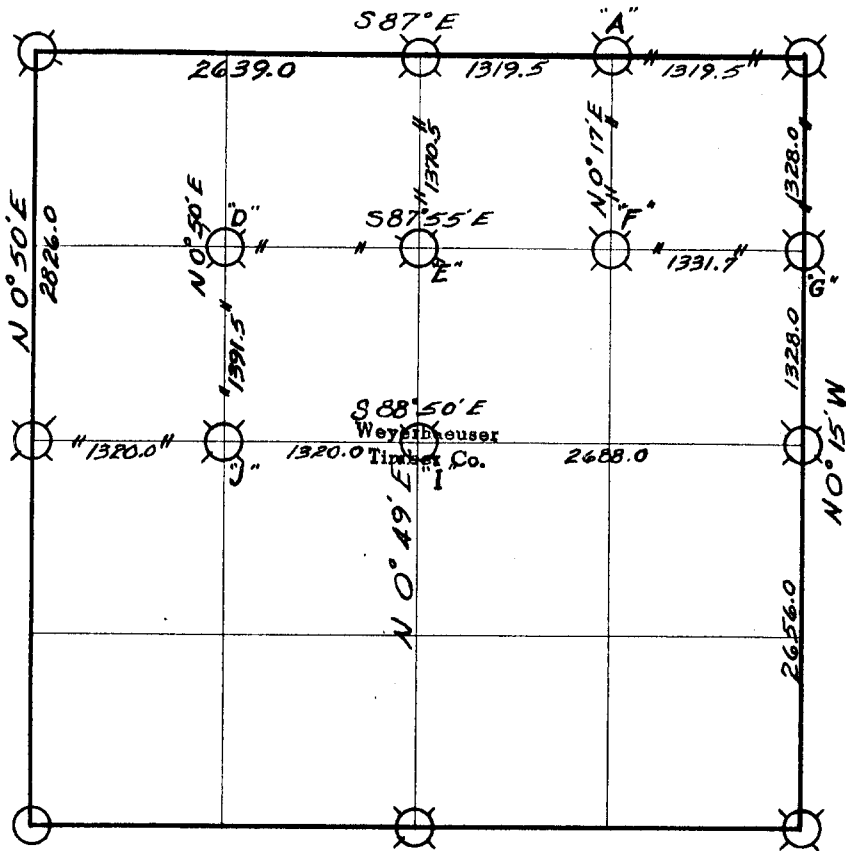


WEYERHAEUSER TIMBER COMPANY

Section 28 Township 23 S Range 3 W



// // Line marked by notch cut in blaze and yellow plastic ribbon



Known corner



Referenced corner

C.G. Book #9

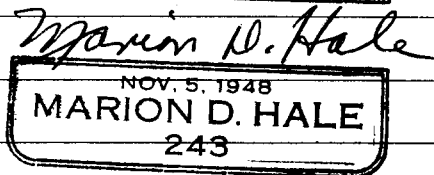
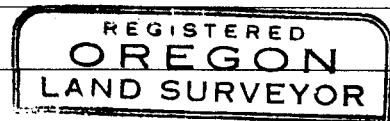
Staff compass and abney slope chain survey

Bearings based on assumed 20° declination

This survey was made for Weyerhaeuser Timber Company by

Marion D. Hale

Helpers: H. E. Case, W. W. Dixon



Dates of survey March 20 to April 1, 1959 Date filed for record & where JUNE, 1959

Distribution

Lane & Douglas County Surveyors' Offices

WTCO - Tacoma - Land Records
 " - Springfield Land Dept.
 " - " Survey File

Reported April 4 19 59

By Marion D. Hale

28 | 27
33 | 34

Corner common to Sections 27, 28, 33 and 34-23S-3W

GLO Survey Record

All evidence lost

Found 1½" iron pipe, scribed Yew post and witness trees below which are the accessories of Gilbert A. Gardner survey filed in the Douglas County Surveyor's office.

Declination 20°.

50" Fir Stmp	S 38° E	16.0'	Partial scribing on bark
7" Fir	N 43° E	31.0'	Scribed S27 RS BT
7" Hemlock	N 47° W	8.1'	Scribed S28 RS BT
8" Fir	S 47° W	27.0'	Scribed S33 RS BT

Referenced by Marion D. Hale (plates and "W" nails only)

Declination 20°

50" Fir Stmp	S 38° E	16.0'
8" Fir	S 47° W	27.0'
5" Fir	N 63° W	7.3'
9" Hemlock	N 56° E	46.1'

28
33

1/4 Corner common to Sections 28 and 33-23S-3W

GLO Survey Record

All evidence lost

Found 1½" iron pipe, Stone and witness trees below which are the accessories of Gilbert A. Gardner survey filed in the Douglas County Surveyor's office.

Declination 20°

20" dead Yew	N 36° E	25.7'	Scribed ½S BT; BLM plate
18" Yew	S 83° E	140.7'	Scribed ½S BT; BLM plate

Referenced by Marion D. Hale (plates and "W" nails only)

Declination 20°

44" Fir Stmp	N 75° E	27.0'
36" Fir Stmp	S 40° W	30.8'

28 | 27

1/4 Corner common to Sections 27 and 28-23S-3W

GLO Survey Record

All evidence lost

Set ½" x 35" galvanized iron pipe for corner by single proportionate method.

Referenced by Marion D. Hale (plates and "W" nails only)

Declination 20°

30" Hem.Stmp	S 16° W	53.3'
36" Ced.Stmp	S 09° E	132.0'

21 | 22
28 | 27

Corner common to Sections 21, 22, 27 and 28-23S-3W

GLO Survey Record All evidence lost

Found post and witness trees below which are the accessories of Gilbert A. Gardner survey filed in the Lane County Surveyor's office.
Declination 20°

24" Hemlock	N 86° W	29.7'	Scribed S21 BT
19" Hemlock	S 74° E	18.3'	Scribed S27 BT
20" Hemlock	N 88° E	16.5'	Scribed S22 BT
68" Cedar	S 62° W	12.3'	Scribed S28 BT

Set 1/2" x 30" galvanized iron pipe by the Cedar post.

Referenced by Marion D. Hale (plates and "W" nails only)
Declination 20°

28" Hemlock	N 48° W	70.2'
68" Cedar	S 62° W	12.3'
30" Fir	S 06° E	30.0'
38" Hemlock	N 07° E	74.3'

29 | 28

1/4 Corner common to Sections 28 and 29-23S-3W

GLO Survey Record

Post		Gone
24" Hemlock	S 40° W 50 lks	Found 34" Hem. stump with part of old face. Partially destroyed by logging.
24" Fir	N 10° E 75 lks	Found 54" x 30' high Fir snag with BLM plate

Set 1/2" x 34" galvanized iron pipe for corner from the above 34" Hemlock stump using the record bearing and distance.

Referenced by Marion D. Hale (plates and "W" nails only)
Declination 20°

39" Hem.stmp	S 70° E	65.5'
30" Ced.stmp	N 75° W	43.6'

CS 51/25C

20 | 21
29 | 28

Corner common to Sections 20, 21, 28 and 29-23S-3W

GLO Survey Record

24" Fir for corner	Found 14" x 2' high rotted and broken Fir snag stump for corner with remains of original scribing visible
5" Hemlock N 30° E	15 lks Gone
6" Hemlock S 60° E	6 lks Gone
6" Hemlock S 45° W	8 lks Gone
10" Hemlock N 15° W	32 lks Possible root holes

Found the witness trees below which are the accessories of Gilbert A. Gardner survey filed in Lane County Surveyor's office
Declination 20°

26" Fir	N 35° E	24.3'	Scribed S21 BT
23" Fir	N 85° W	24.6'	Scribed S20 BT
23" Fir	S 34° W	18.6'	Scribed S29 BT
20" Fir	S 41° E	28.0'	Scribed S28 BT

Set 1/2" x 35" galvanized iron pipe in center of the rotted fir stump for corner.

Referenced by Marion D. Hale (plates and "W" nails only)
Declination 20°

20" Fir	S 41° E	28.0'
23" Fir	S 34° W	18.6'
40" Fir	N 62° E	64.3'
26" Fir	N 66° W	51.4'

✓✓

21
28

1/4 Corner common to Sections 21 and 28-23S-3W

GLO Survey Record

All evidence lost

Set 1/2" x 35" galvanized iron pipe for corner by single proportionate method.

Referenced by Marion D. Hale (plates and "W" nails only)
Declination 20°

18" Fir	S 75° W	7.9'
22" Fir	N 29° W	34.0'

✓✓

E 1/16

Corner common to Sections 21 and 28-23S-3W = Point "A"

Set 1/2" x 36" galvanized iron pipe for corner by single proportionate method.

Referenced by Marion D. Hale (plates and "W" nails only)
Declination 20°

20" Fir	S 83° E	8.8'
22" Fir	N 05° W	13.7'

✓

NW 1/16 Corner for center of NW $\frac{1}{4}$ Section 28-23S-3W = Point "D"
Set 1/2" x 35" galvanized iron pipe for corner by measuring calculated distance and bearing North from CW 1/16 corner (Point "J")
Referenced by Marion D. Hale (plates and "W" nails only)
Declination 20°
4" Fir S 30° E 8.4'
4" Fir N 58° E 5.9'

CN 1/16 Corner common to Section 28-23S-3W = Point "E"
Set 1/2" x 35" galvanized iron pipe for corner by single proportionate method.
Referenced by Marion D. Hale (plates and "W" nails only)
Declination 20°
24" Hemlock N 50° E 8.6'
36" Fir S 34° E 31.0'

NE 1/16 Corner for center of NE $\frac{1}{4}$ Section 28-23S-3W = Point "F"
Set 1/2" x 36" galvanized iron pipe for corner by measuring calculated distance and bearing West from the N 1/16 corner between Sections 27 and 28.
Referenced by Marion D. Hale (plates and "W" nails only)
Declination 20°
42" Fir N 44° W 28.3'
56" Fir S 72° E 9.9'

N 1/16 Corner between Sections 27 and 28-23S-3W = Point "G"
Set 1/2" x 35" galvanized iron pipe for corner by single proportionate method.
Referenced by Marion D. Hale (plates and "W" nails only)
Declination 20°
24" Fir S 87° W 8.0'
22" Fir N 08° W 12.9'

C 1/4 Corner for center of Section 28-23S-3W = Point "I"

Set 1/2" x 35" galvanized iron pipe in a 42" Fir windfall for the corner by the inter-section method.

Referenced by Marion D. Hale (plates and "W" nails only)
Declination 20°

36" Fir stmp N 62° W 14.1'
65" Fir stmp N 12° W 57.7'

✓✓

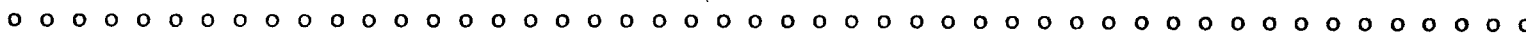
CW 1/16 Corner for Section 28-23S-3W = Point "J"

Set 1/2" x 35" galvanized iron pipe for corner by single proportionate method.

Referenced by Marion D. Hale (plates and "W" nails only)
Declination 20°

30" Hem.stmp S 34° E 24.6'
30" Hem.stmp N 43° W 17.0'

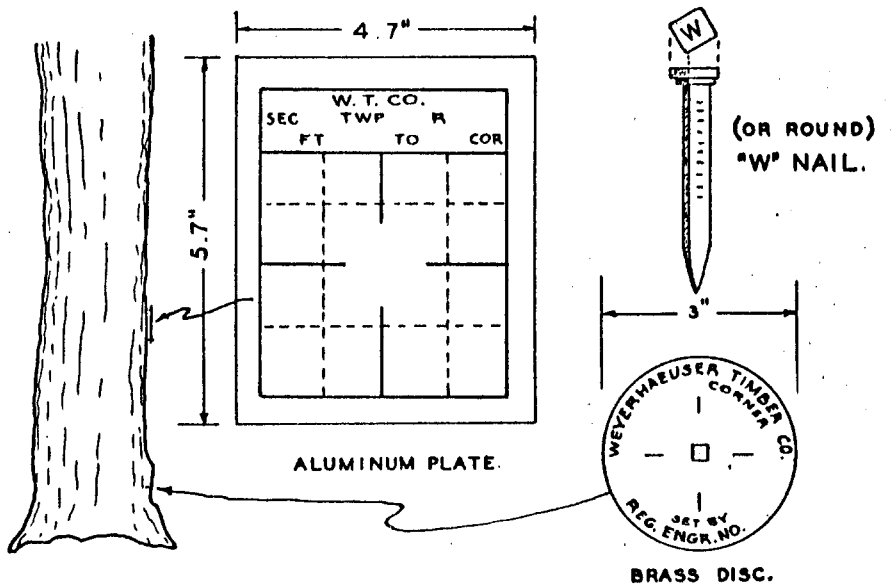
✓



WEYERHAEUSER TIMBER COMPANY CORNER REFERENCE METHOD

A "W" nail driven thru the hole in a brass disc, into a notch cut low on a tree, stamped with the Oregon registered land surveyor or professional engineer registration number.

An embossed aluminum plate nailed head high on same tree with 8d aluminum nails, with distance and bearing from the "W" nail to the corner stamped on it.



CS 51/25F