

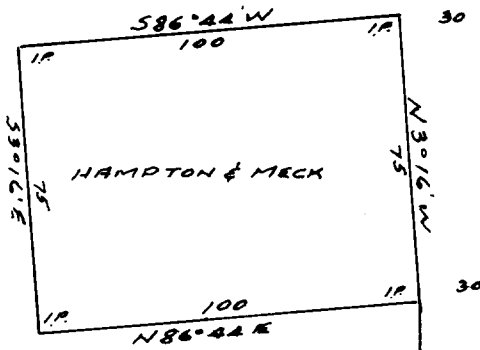
FILED
RECEIVED

JUN 5 1959

COUNTY SURVEYOR
DOUGLAS COUNTY, ORE.

R. 10 W.

BLUMBERG



T. BLUMBERG

20

S.

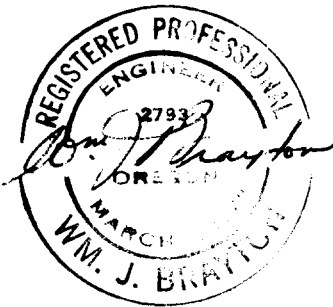
BLUMBERG

NORRILL CORK SWEET RIVER COUNTY ROAD



WEST 1121.661 31 32 FILE NO

SURVEY
 HAMPTON & MECK
 S.E. 1/4, N.E. 1/4, SEC. 31.
 T. 20S., R. 10W. W.M.
 DOUGLAS COUNTY
 Scale 1" = 50' May '59.



COUNTY SURVEYORS FILE DATA
DO NOT REMOVE FROM OFFICE