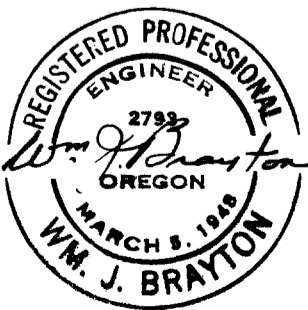
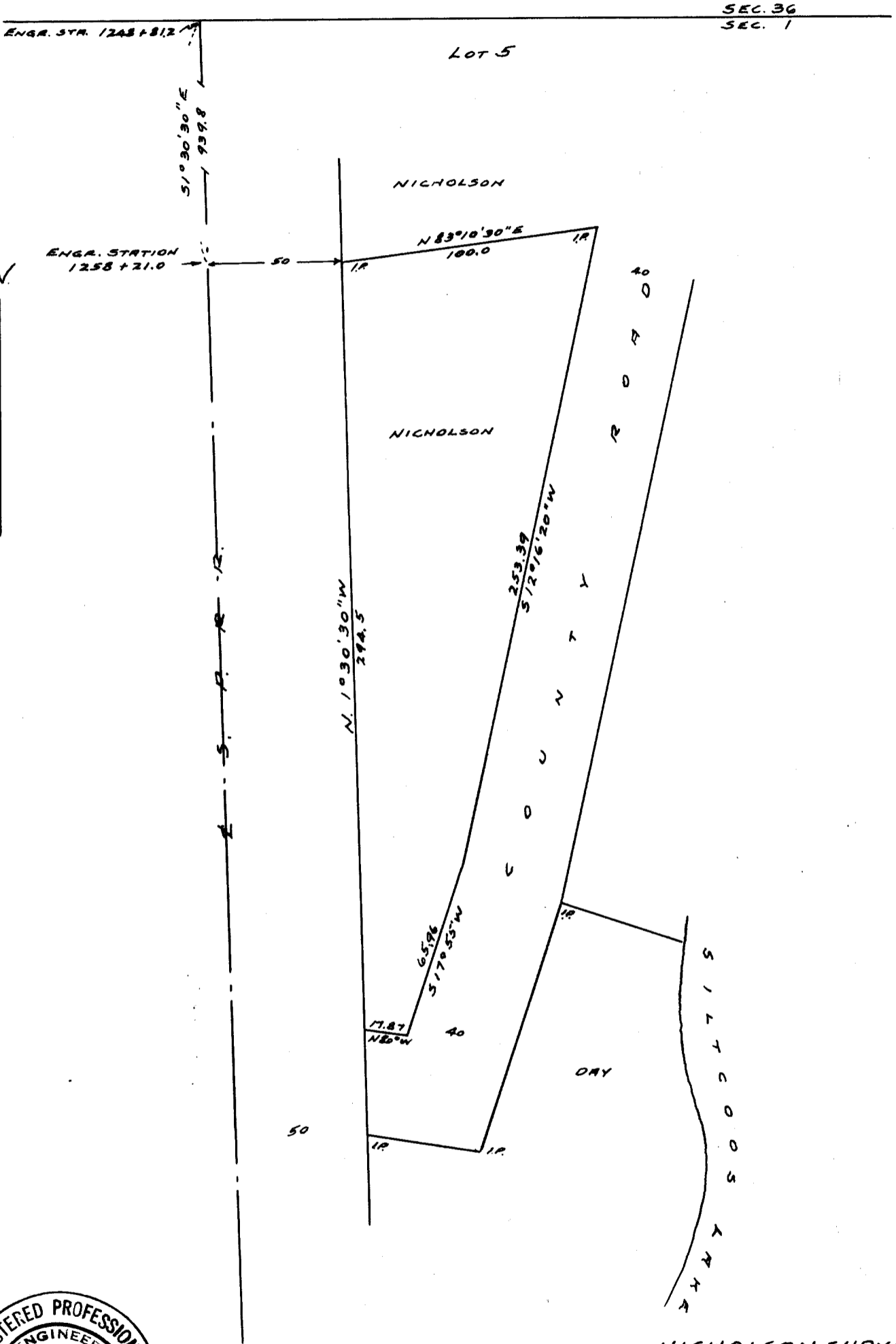


**COUNTY SURVEYORS FILE DATA
DO NOT REMOVE FROM OFFICE**

T.
19
S.

R. 12 W



FILED *20*
RECEIVED

JUN 5 1959

COUNTY SURVEYOR
DOUGLAS COUNTY, ORE.

NICHOLSON SURVEY

LOT 5, SEC. 1.

T. 20 S. R. 12 W. W. M.

DOUGLAS COUNTY

Scale 1" = 50' April '59.

C. S. File No. 51/23 P