

FILED
RECEIVED

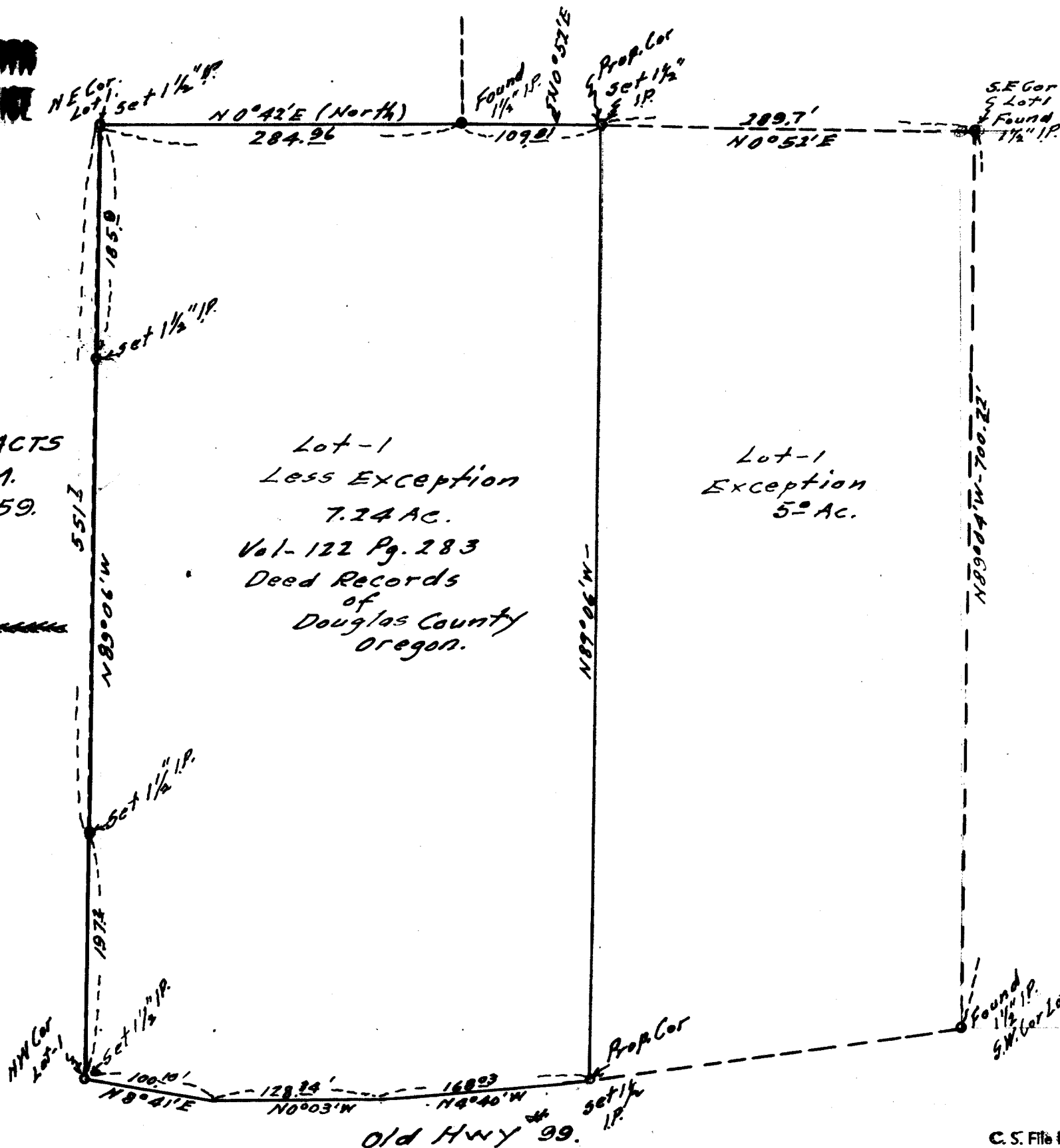
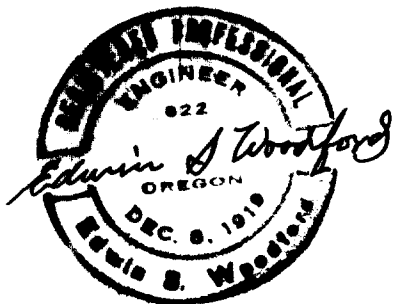
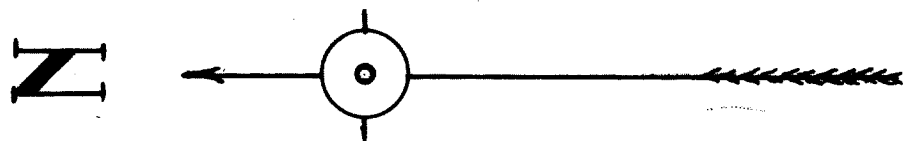
MAY 8 1959

DO NOT REMOVE FROM OFFICE

COUNTY SURVEYOR
DOUGLAS COUNTY, ORE.

MAP
OF
LAND SURVEYED
IN
LOT - 1
OF

GREEN VALLEY ORCHARD TRACTS
Sec. 2 - Tp. 28S - Rg. 6W W.M.
Scale - 1" = 100' April 1959.



Lot-1
Less Exception
7.24 AC.
Vol-122 Pg. 283
Deed Records
of
Douglas County
Oregon.

Lot-1
Exception
5.0 AC.