

RECEIVED

APR 22 1959

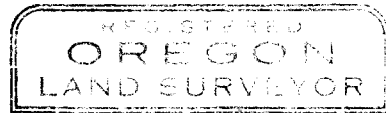
COUNTY SURVEYOR
DOUGLAS COUNTY, ORE.

COUNTY SURVEYORS FILE DATA
DO NOT REMOVE FROM OFFICE

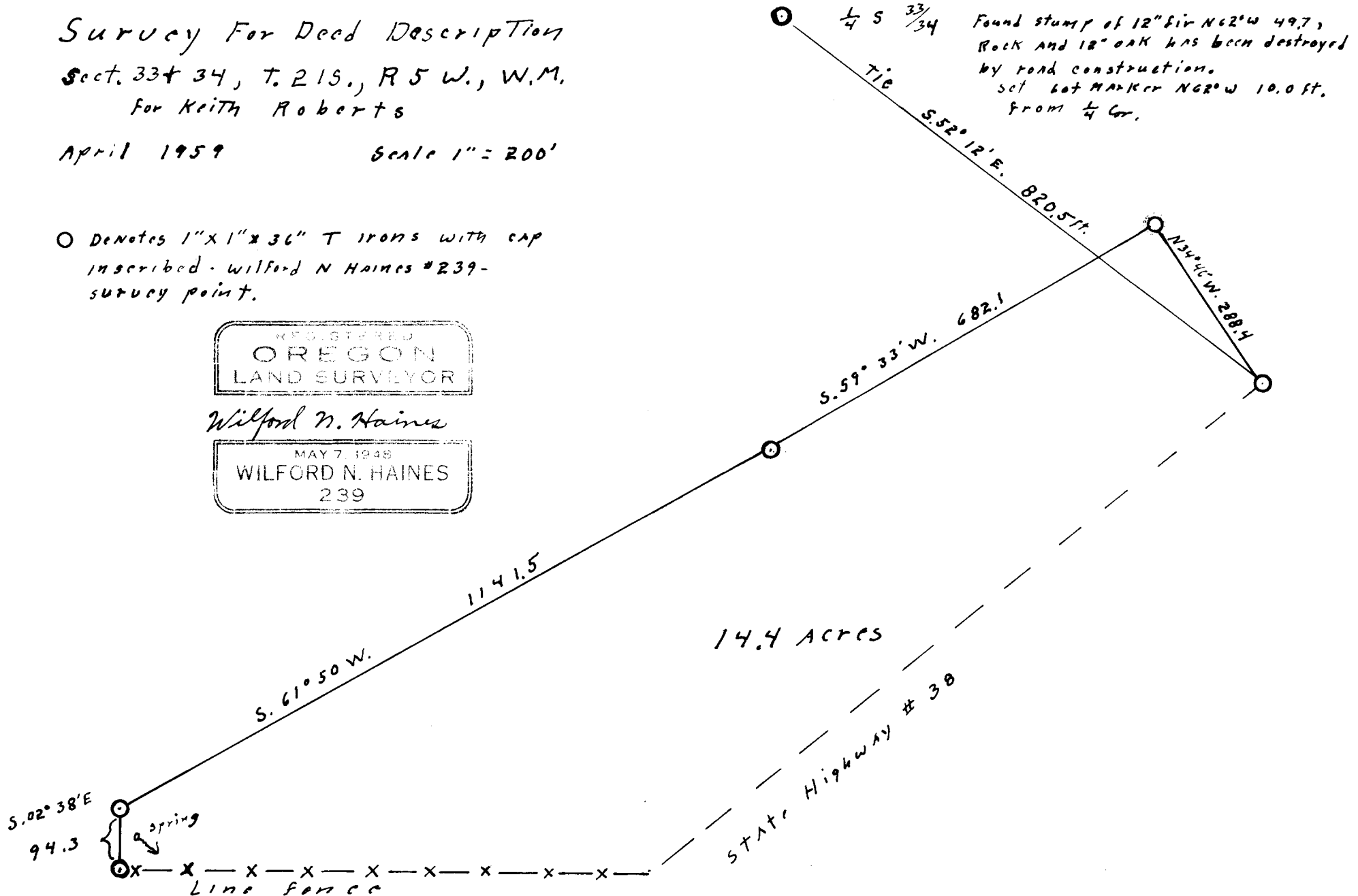
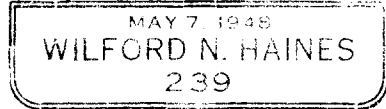
Survey For Deed Description
Sect. 33 & 34, T. 21 S., R. 5 W., W.M.
for Keith Roberts

April 1959 Scale 1" = 200'

○ Denotes 1" x 1" x 36" T irons with cap
inscribed - Wilford N Haines #239 -
survey point.



Wilford N. Haines



51/17 C. S. File No.