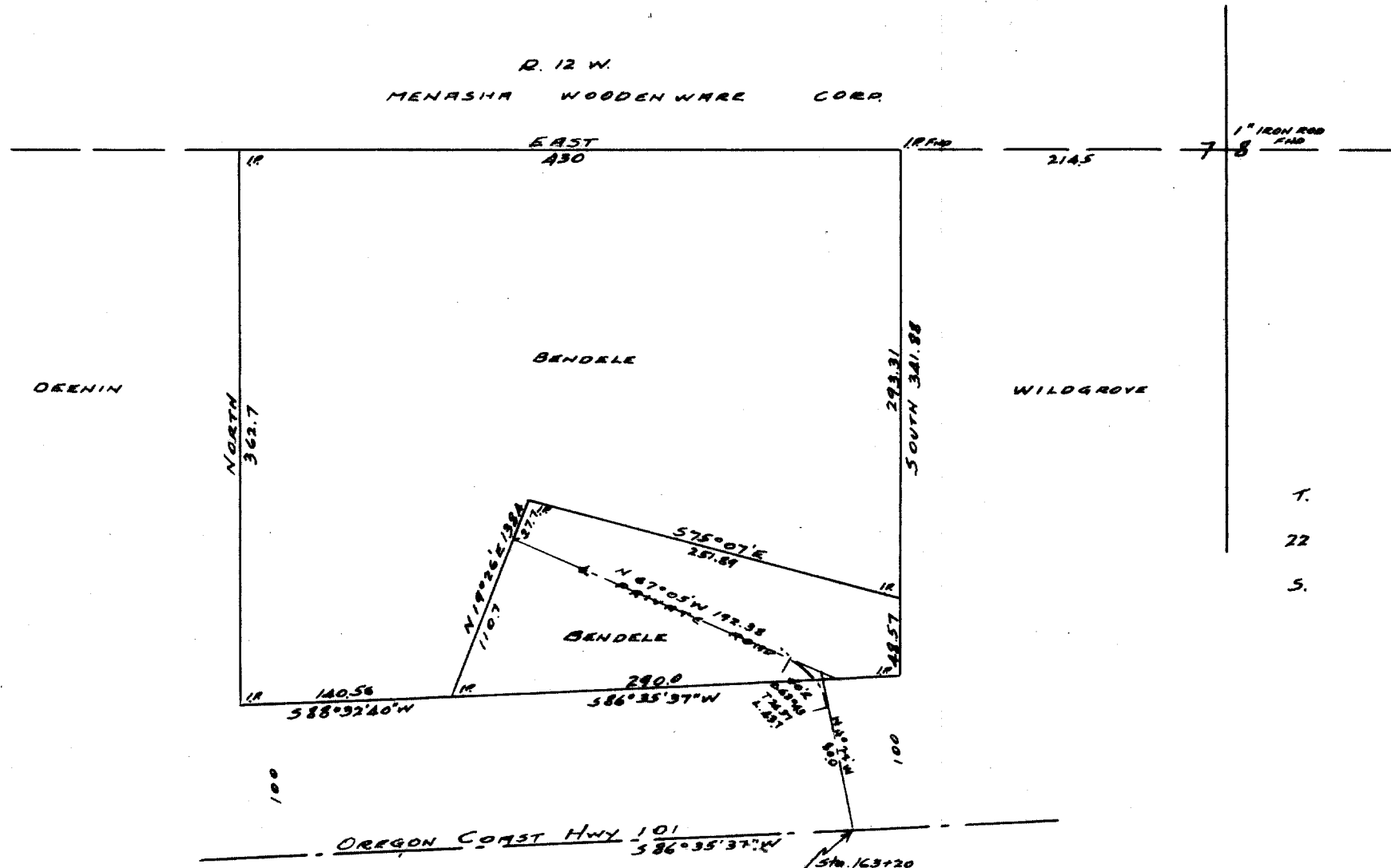


FILED *22*
RECEIVED

MAR 25 1959

COUNTY SURVEYOR
DOUGLAS COUNTY, ORE.



**COUNTY SURVEYORS FEE DATA
DO NOT REMOVE FROM OFFICE**

BENDELE SURVEY
N.E. ^{SE} 1/4, S.W. 1/4, SEC. 7
T. 22 S. R. 12 W. W. M.
DOUGLAS COUNTY
Scale 1"=100' Mar. '59.



C. S. File No. 51/11 P