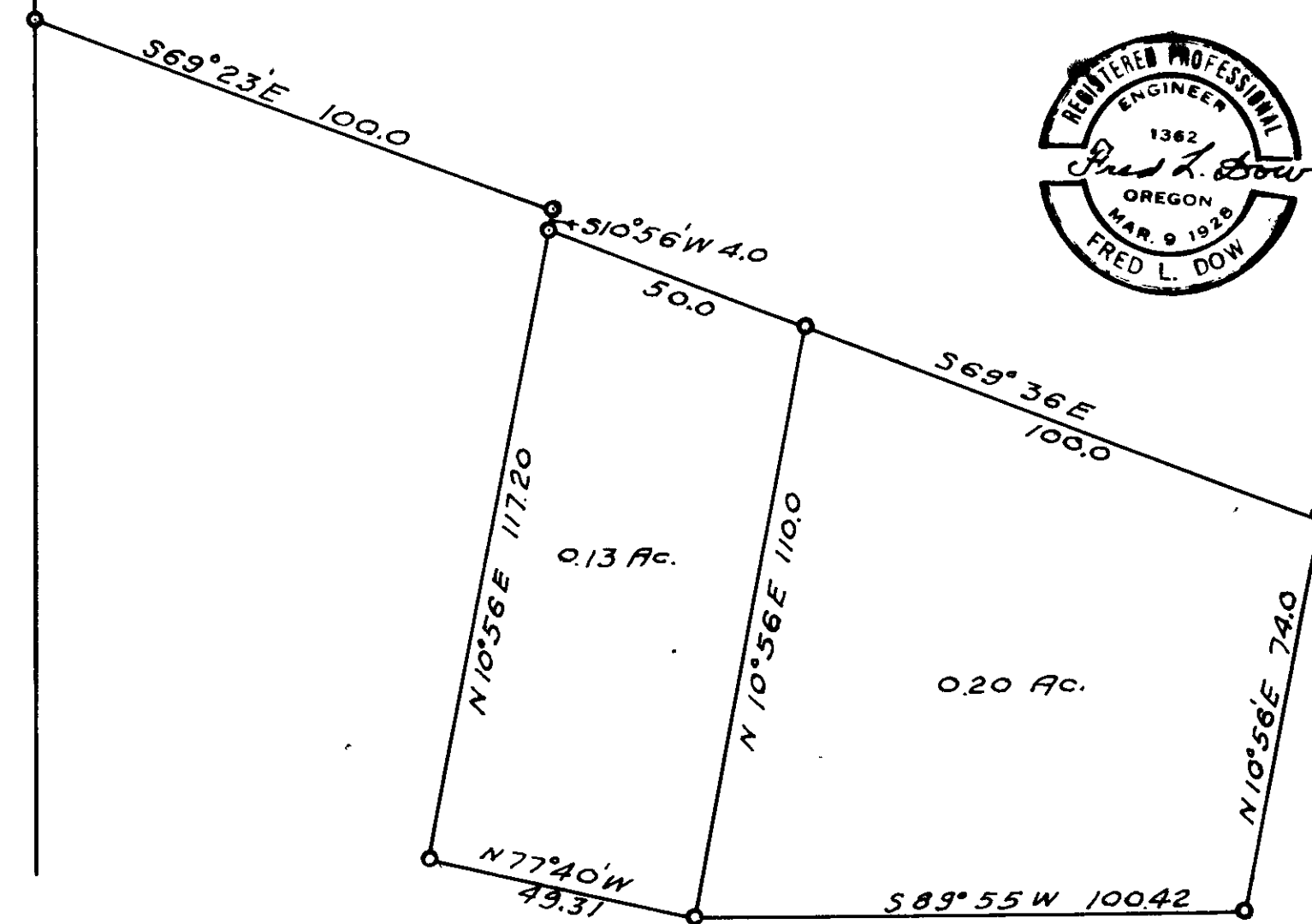
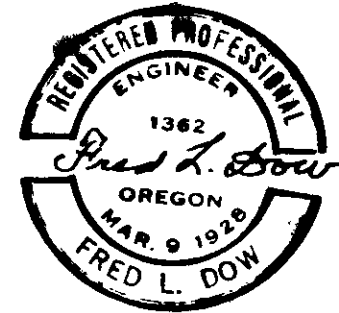


T.29 S. R.5 W.

23 24

SOUTH  
2285.45

# DELBERT TRASK MYRTLE CREEK SECTION 24, T. 29 S. R. 5 W. JUNE 1956 1" = 30"



FILED  
RECEIVED

APR 21 1958

COUNTY SURVEYOR  
DOUGLAS COUNTY, ORE.

C.S. File 50/151

P