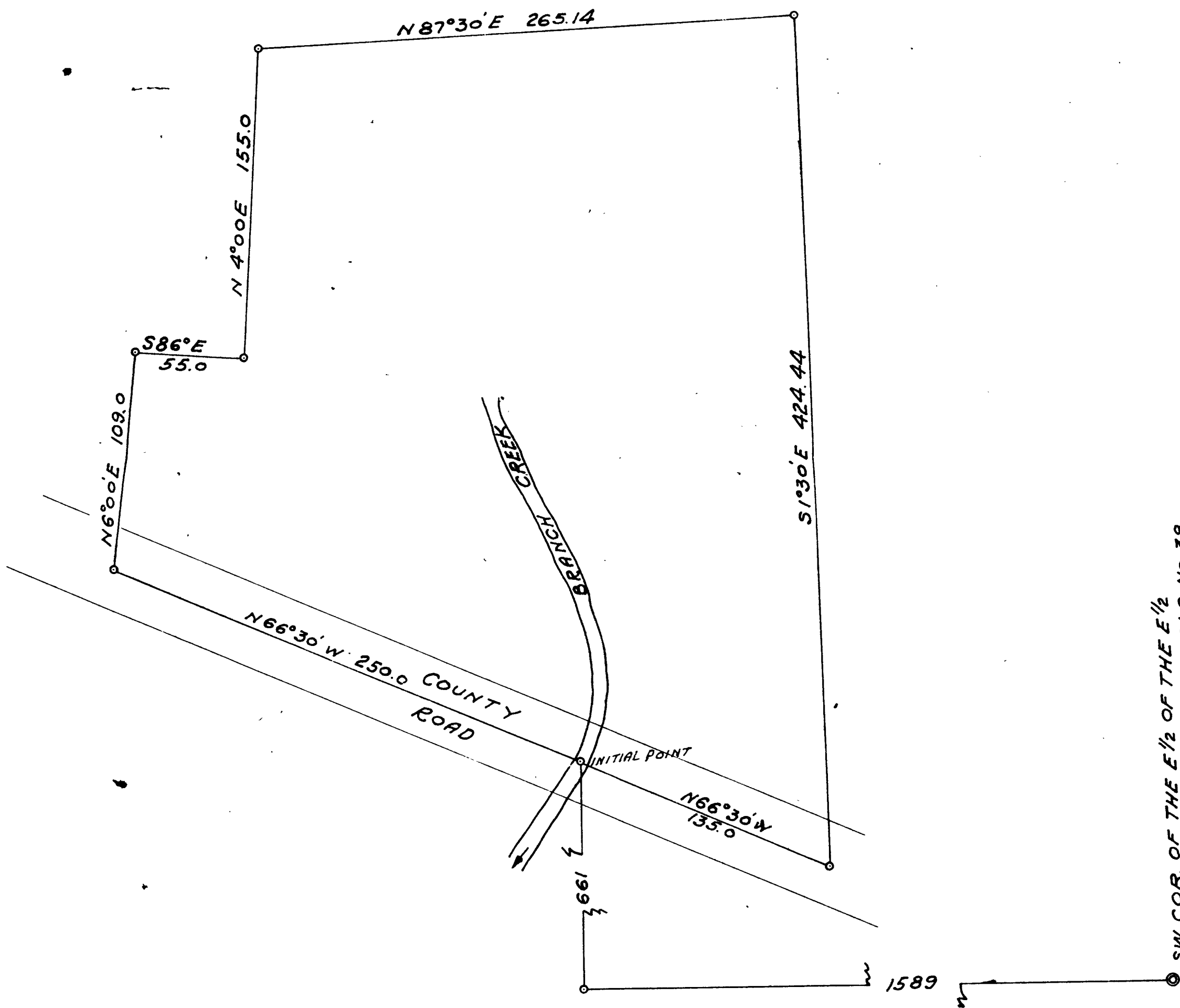


CLYDE OSBORN  
 SECTION 22 T. 29 S. R. 4 W.  
 AUGUST 1952 FRED L. DOW  
 1" = 50' CIVIL ENGINEER



SW COR. OF THE E 1/2 OF THE E 1/2  
 OF THE BENJ. L. STEPHENS DLC No. 38  
 IN SEC 22, T. 29 S. R. 4 W.