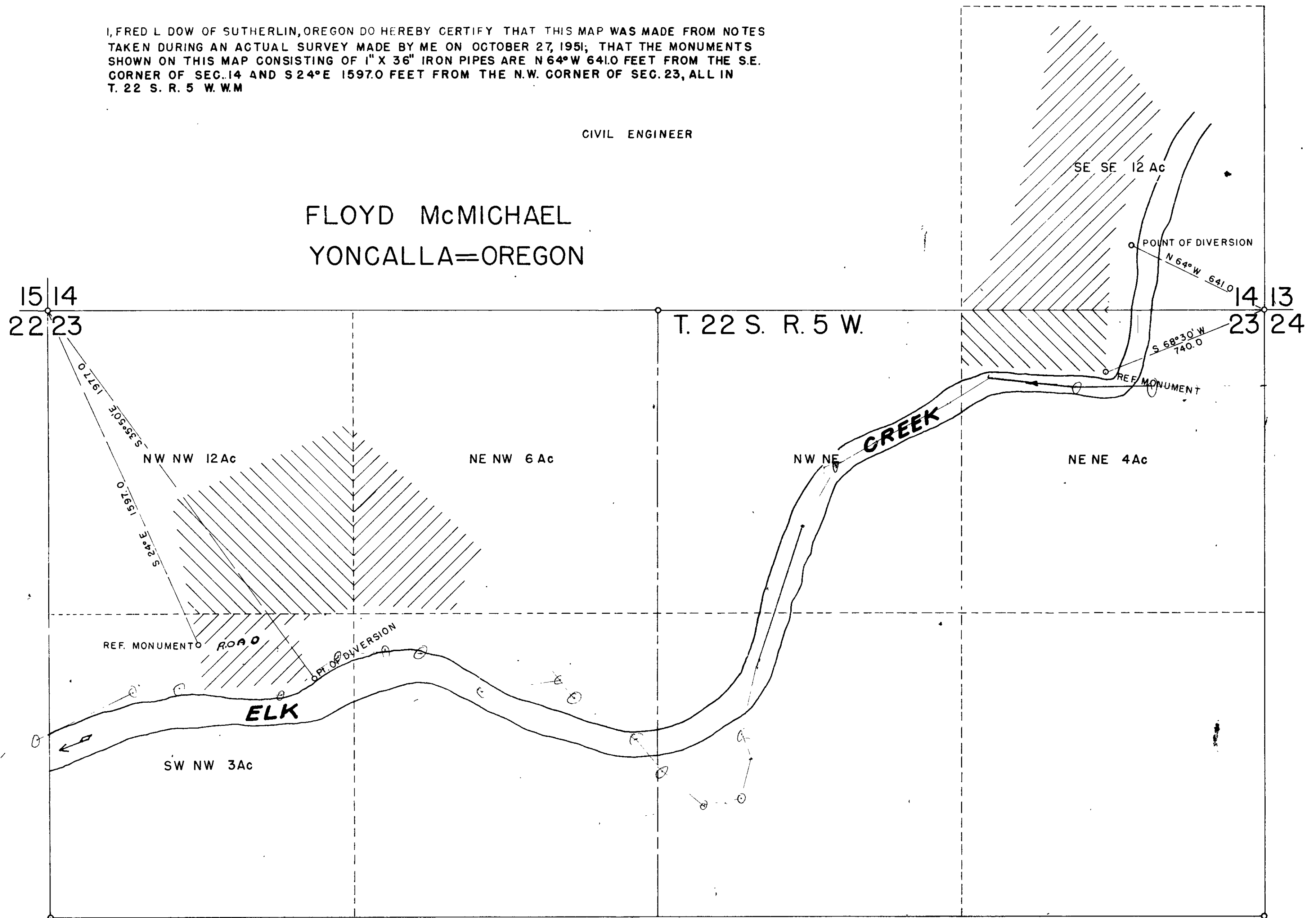


I, FRED L DOW OF SUTHERLIN, OREGON DO HEREBY CERTIFY THAT THIS MAP WAS MADE FROM NOTES TAKEN DURING AN ACTUAL SURVEY MADE BY ME ON OCTOBER 27, 1951; THAT THE MONUMENTS SHOWN ON THIS MAP CONSISTING OF 1" X 36" IRON PIPES ARE N 64° W 641.0 FEET FROM THE S.E. CORNER OF SEC. 14 AND S 24° E 1597.0 FEET FROM THE N.W. CORNER OF SEC. 23, ALL IN T. 22 S. R. 5 W. W.M

CIVIL ENGINEER

FLOYD McMICHAEL
YONCALLA=OREGON



C.S. File No. 50193