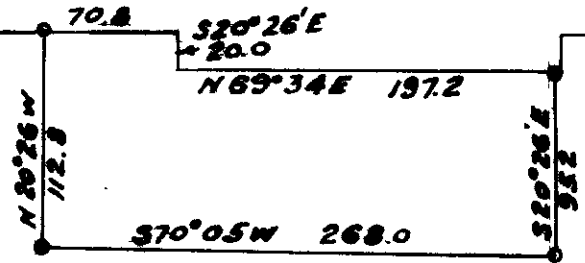




E UMPQUA HIGHWAY

N69°34'E 494.5



N40°39'E 1703.0  
ANGLE IN SOUTH BOUNDARY  
ANDREW SAWYER OLC. No. 89



L.A. KIEFER  
ELKTON OREGON  
AUGUST 1952 FRED L. DOW  
1" = 100' CIV. ENGINEER

COUNTY SURVEYORS FILE DATA  
DO NOT REMOVE FROM OFFICE

T22505W