

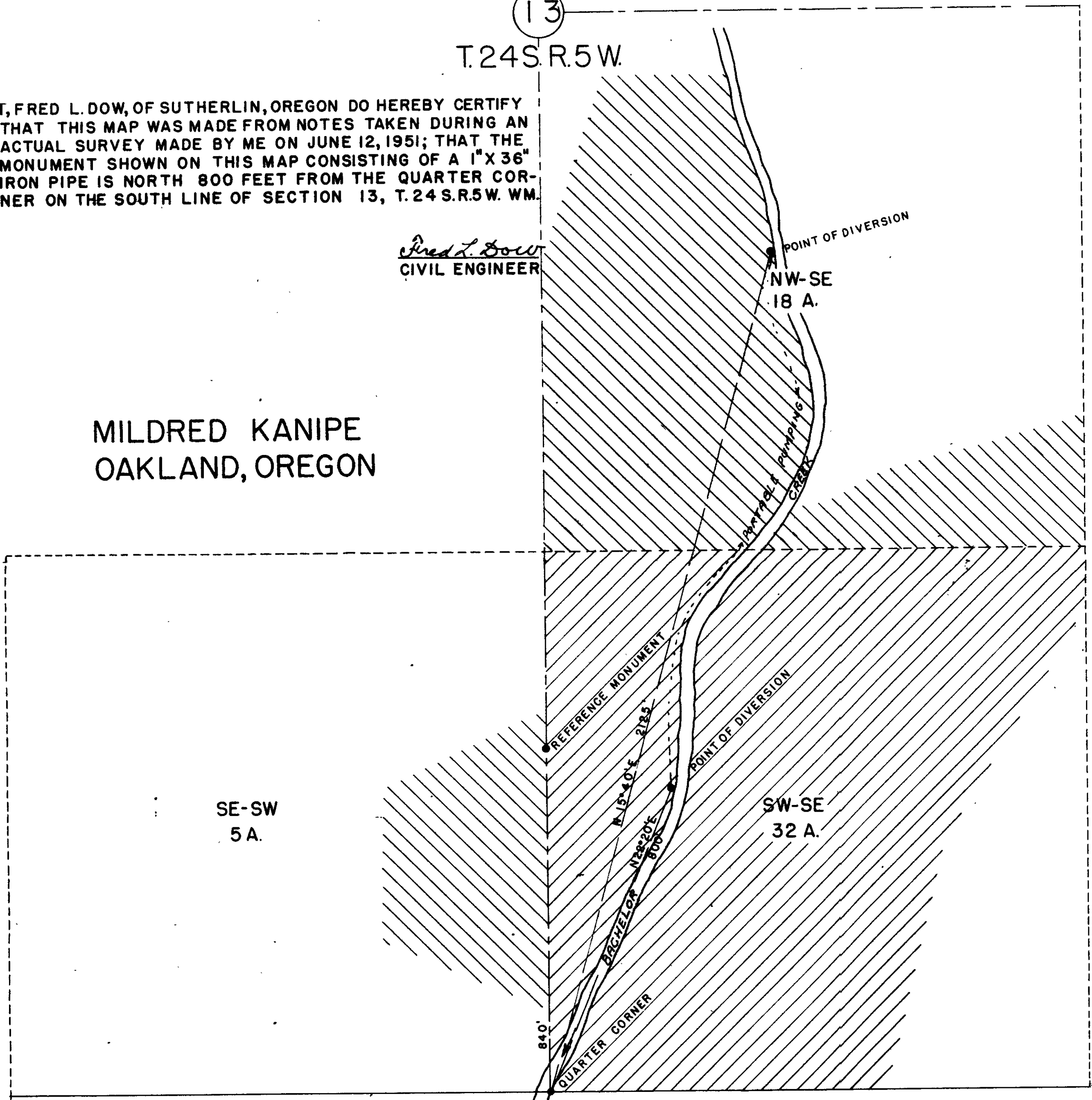
13

T.24S.R.5W.

I, FRED L. DOW, OF SUTHERLIN, OREGON DO HEREBY CERTIFY THAT THIS MAP WAS MADE FROM NOTES TAKEN DURING AN ACTUAL SURVEY MADE BY ME ON JUNE 12, 1951; THAT THE MONUMENT SHOWN ON THIS MAP CONSISTING OF A 1" X 36" IRON PIPE IS NORTH 800 FEET FROM THE QUARTER CORNER ON THE SOUTH LINE OF SECTION 13, T. 24 S. R. 5 W. WM.

*Fred L. Dow*  
CIVIL ENGINEER

MILDRED KANIPE  
OAKLAND, OREGON



CS FILE FOLDER

CONTAINS

MORE

INFORMATION