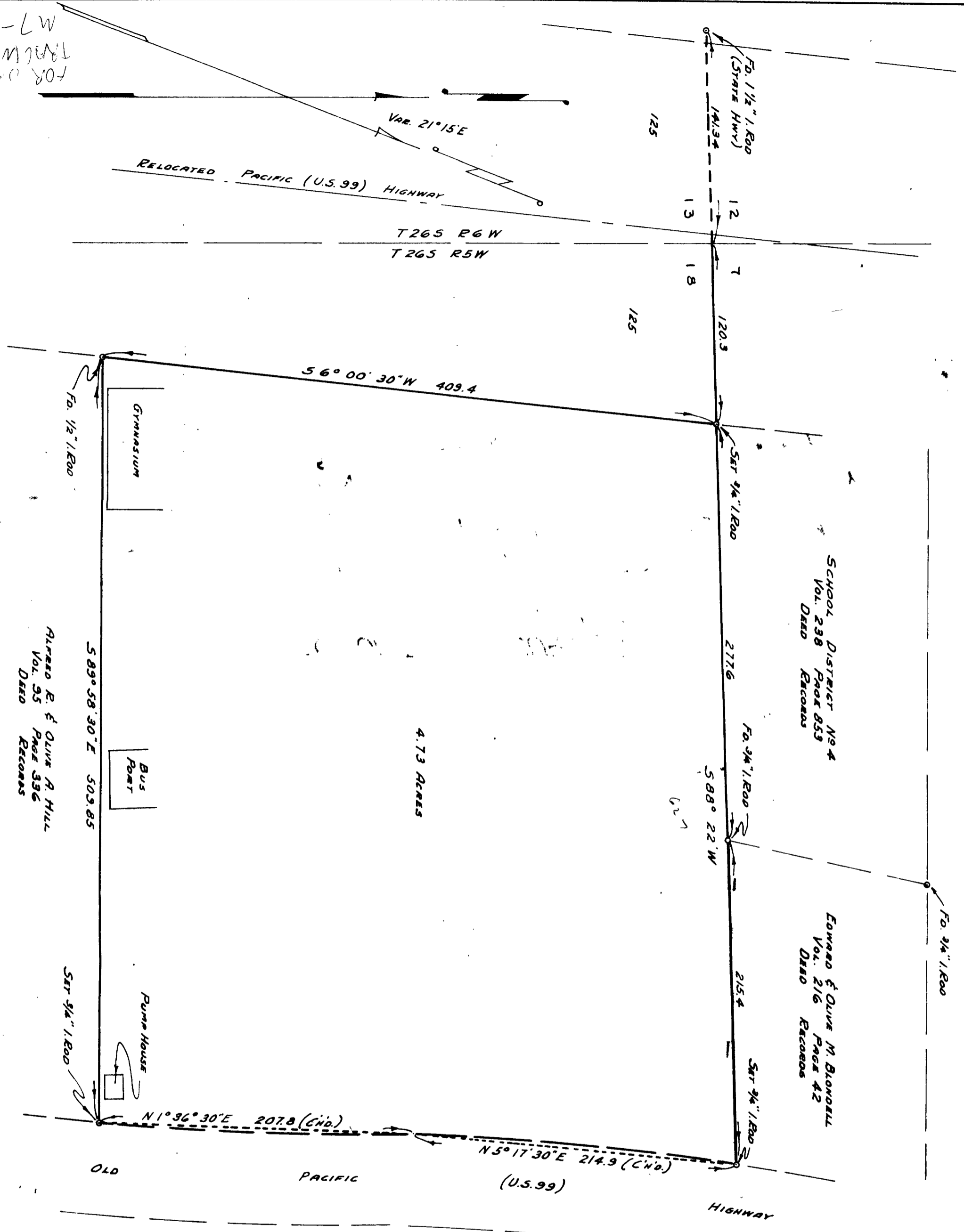


FOR DEED DESCRIPTION
 TRACK W 6 SEE
 M 7-A



COUNTY SURVEYOR'S OFFICE
 DOUGLAS COUNTY, OREGON

SURVEY FOR DEED DESCRIPTION
 SECTION 18, T26S.R5W. W.M.

BEN B. IRVING COUNTY SURVEYOR
 SURVEYED JANUARY 11, 1955 BY
 JAMES W. BYRON - DEPUTY SCALE 1" = 60'
 SURVEYED FOR SCHOOL DIST. 4

REGISTERED
 OREGON
 LAND SURVEYOR

James W. Byron
 NOV. 6, 1955
 JAMES W. BYRON
 303