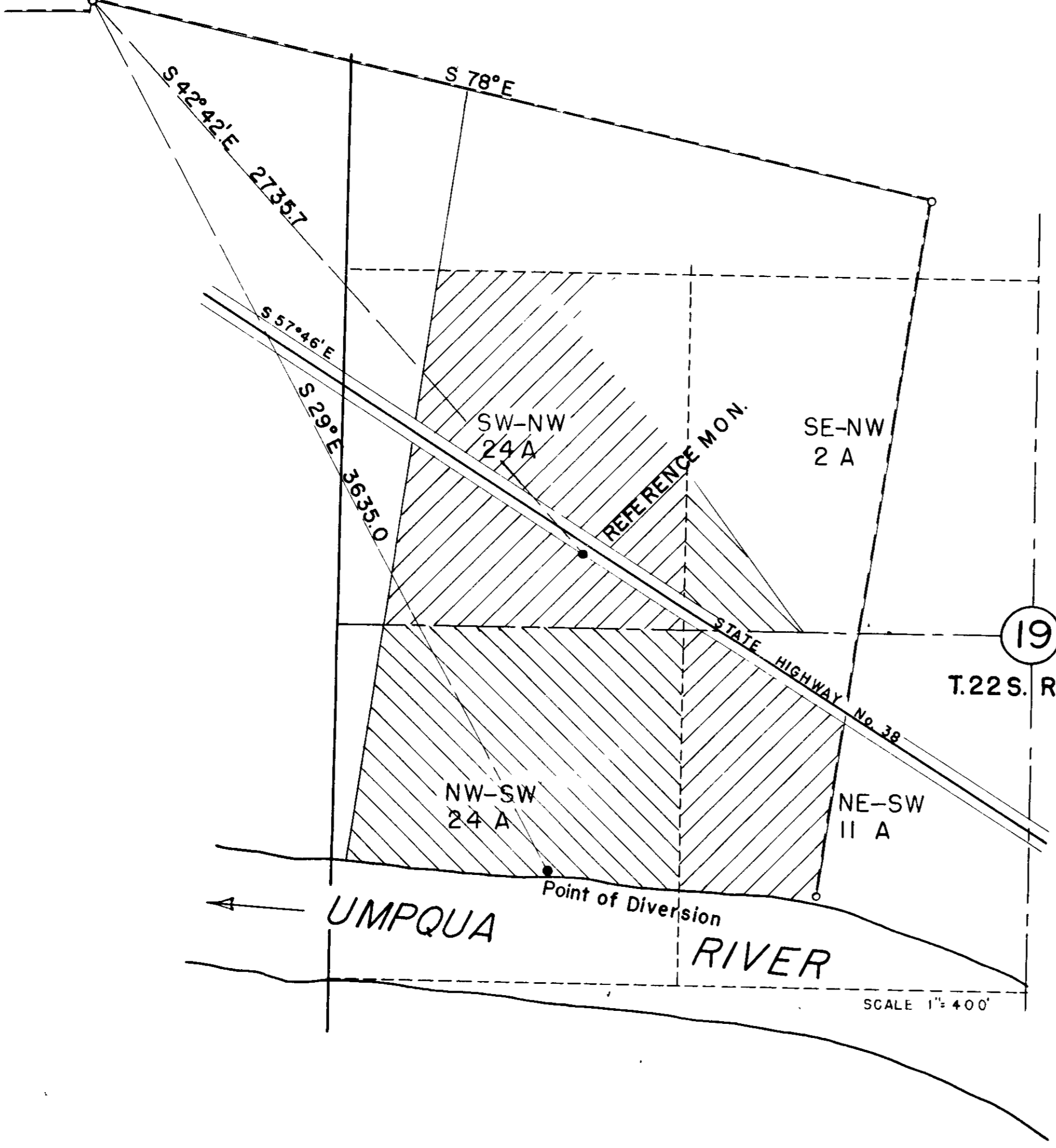
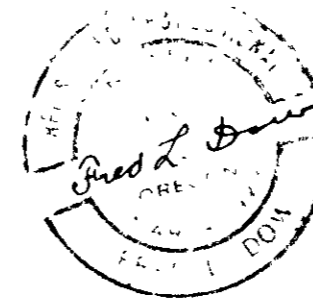


S.W. Corner John Scott D.L.C.
N.W. Corner H.B.Hart D.L.C. No. 42



I, FRED L. DOW OF SUTHERLIN, OREGON DO HEREBY CERTIFY THAT THIS MAP WAS MADE FROM NOTES TAKEN DURING AN ACTUAL SURVEY MADE BY ME ON APRIL 2nd. 1951; THAT THE MONUMENT SHOWN ON THIS MAP CONSISTING OF A 1" X 36" IRON PIPE BEARS SOUTH 42° 42' EAST 2735.7 FEET FROM THE SOUTHWEST CORNER OF THE JOHN SCOTT D.L.C. IN SECTION 24, T. 22 S. R. 8 W. W.M.



Fred L. Dow

OLIVER HAINES
ELKTON—OREGON