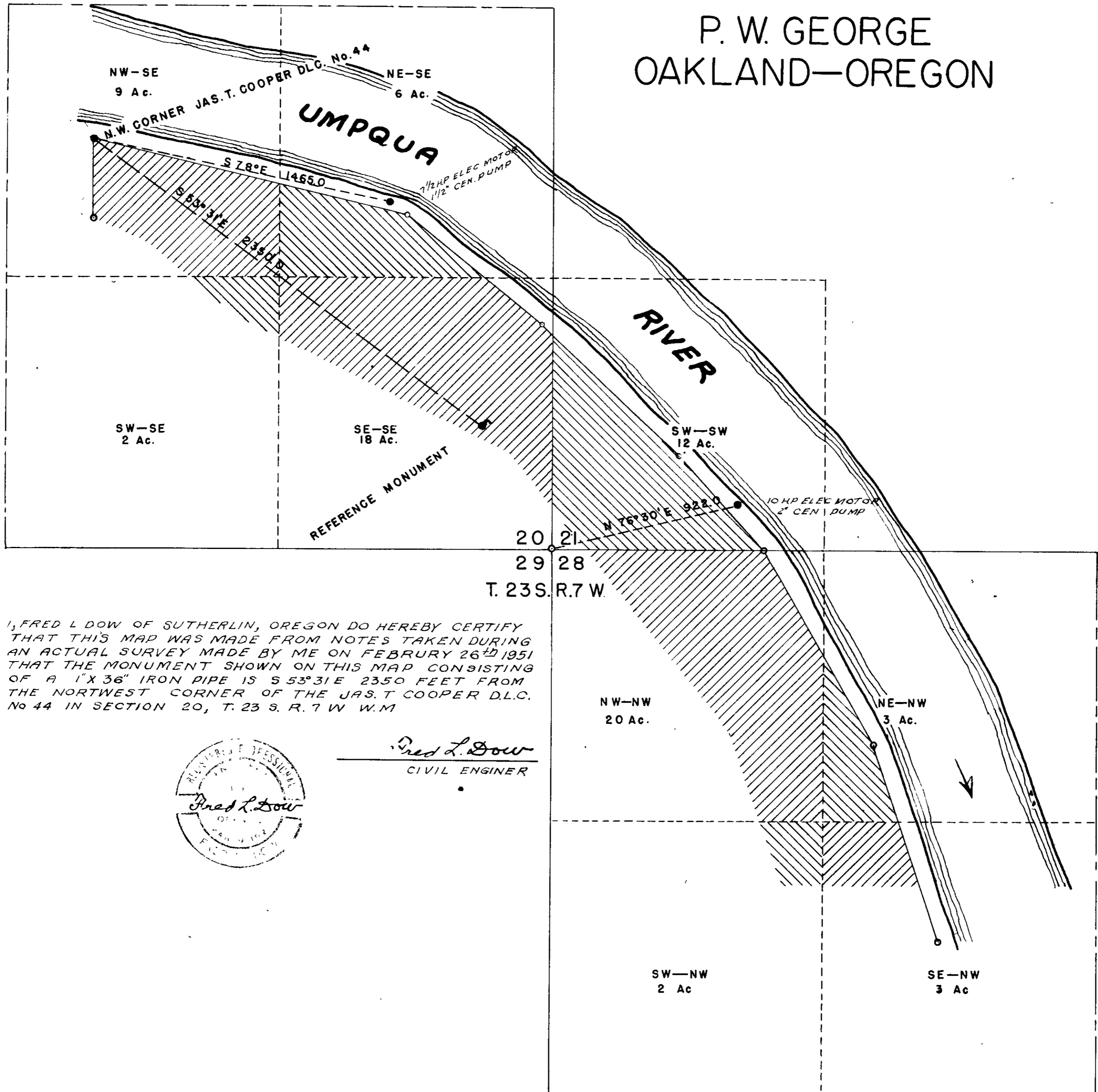
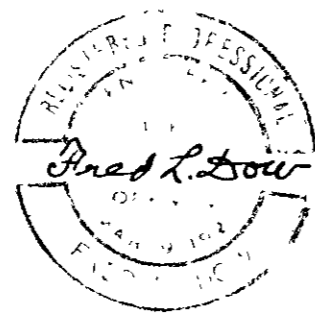


1" = 400

P. W. GEORGE OAKLAND—OREGON



I, FRED L. DOW OF SUTHERLIN, OREGON DO HEREBY CERTIFY THAT THIS MAP WAS MADE FROM NOTES TAKEN DURING AN ACTUAL SURVEY MADE BY ME ON FEBRUARY 26th 1951 THAT THE MONUMENT SHOWN ON THIS MAP CONSISTING OF A 1" X 36" IRON PIPE IS S 53° 31' E 2350 FEET FROM THE NORTHWEST CORNER OF THE JAS. T. COOPER D.L.C. No. 44 IN SECTION 20, T. 23 S. R. 7 W. W.M.



Fred L. Dow
CIVIL ENGINEER