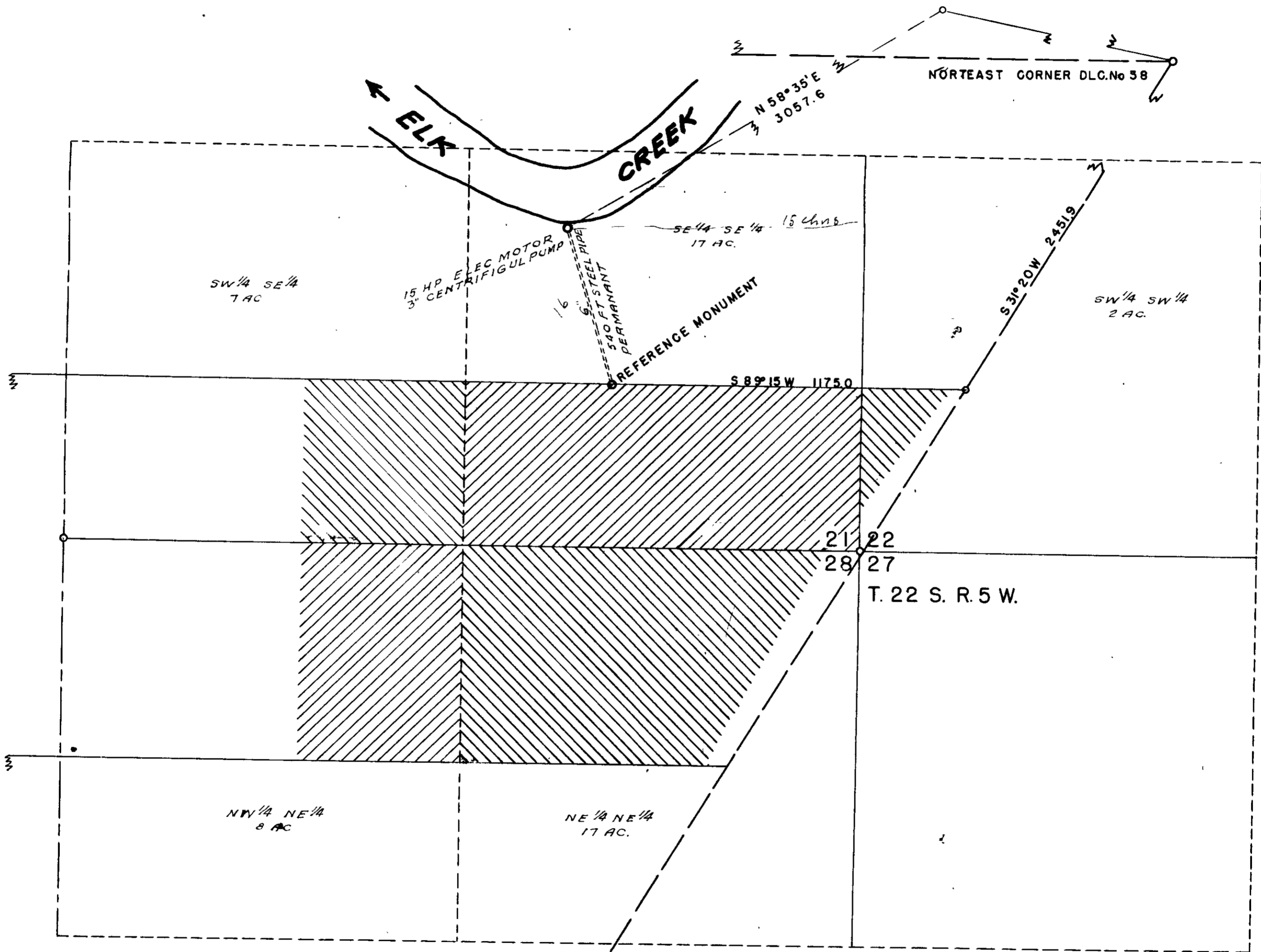


PAUL FLURY  
YONCALLA ORE  
SCALE 1" = 300'



I, FRED L. DOW OF SUTHERLIN, ORE. DO HEREBY CERTIFY THAT THIS MAP WAS MADE FROM NOTES TAKEN DURING AN ACTUAL SURVEY MADE BY ME ON FEBRUARY 12<sup>th</sup> 1951; THAT THE MONUMENT SHOWN ON THIS MAP CONSISTING OF A 1"X30" IRON PIPE BEARS SOUTH 31°20'W 2451.9 FT. AND SOUTH 89°15'WEST 1175.0 FEET FROM THE NORTHEAST CORNER OF THE JESSE APPLIGATE DLC. No. 38 IN SEC. 22, TOWNSHIP 22 SOUTH, RANGE 5 WEST W.M.

Fred L. Dow  
CIVIL ENGINEER.

