

33 34 389°52'E 11747 (19 CH BY PLAT) SET 1" PIPE ANGLE CLAIM CORNER T.24 S. R.5 W. 589°52'E 4100.7 T.25 S. R.5 W. 34 35
4 3 SW CORNER J. TIBBETS D.L.C. No. 47 SET STAKE FOR SEC. CORNER 12' ASH S1°W 366 18' OAK N 78°W 456
3 2

Fr. 1" Iron pipe - rotten stump original bearing tree 24' OAK N 30°E 310 LKS

FILED RECEIVED SEP. 4 1959 COUNTY SURVEYOR JOUGLAS COUNTY, ORE.

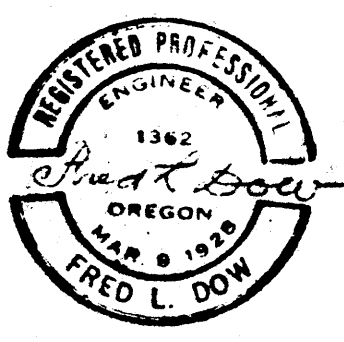
COUNTY SURVEYORS FILE DATA DO NOT REMOVE FROM OFFICE

RAY DAVIS OAKLAND

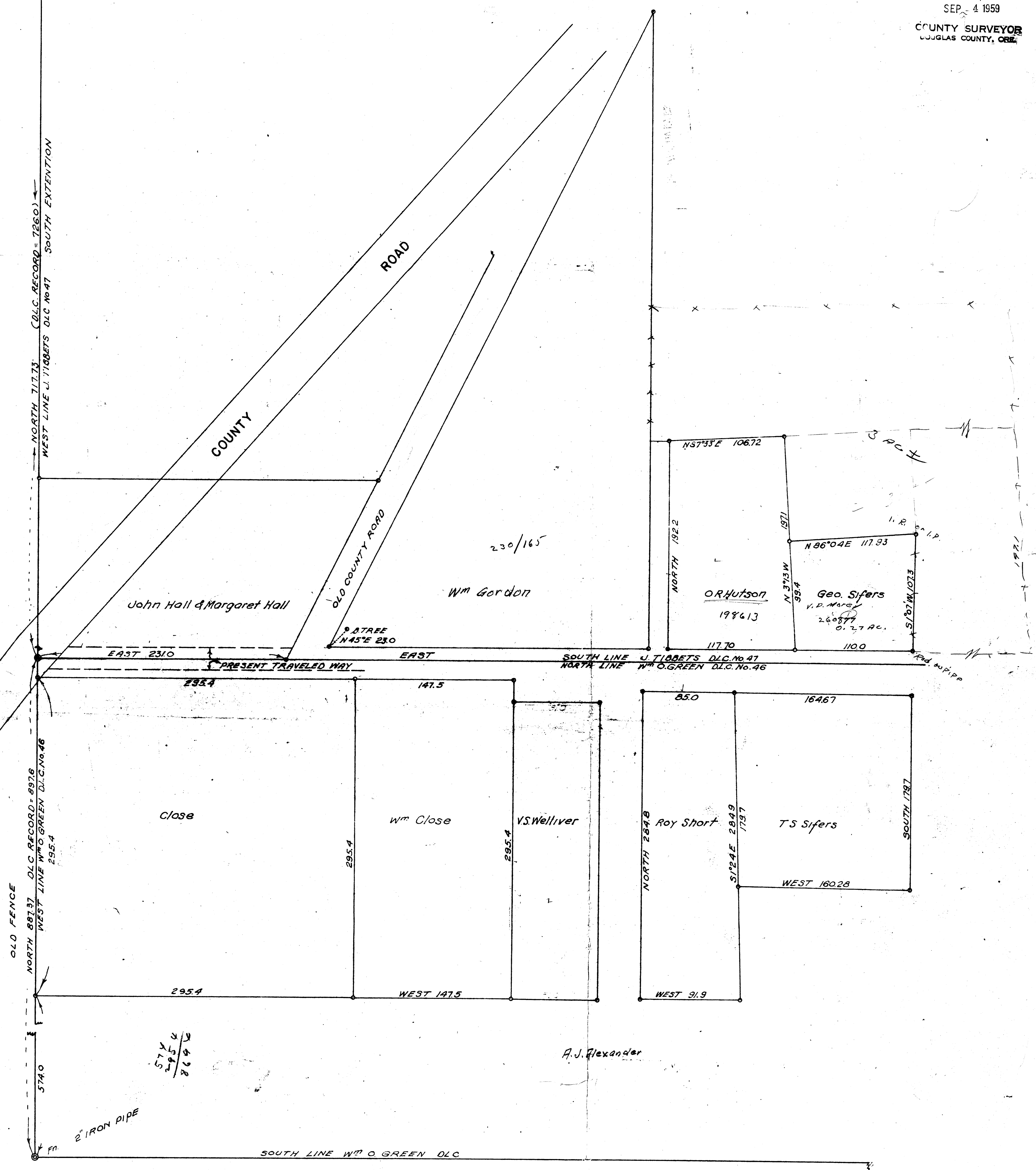
SURVEY TO ESTABLISH THE S.W. AND N.W. CORNERS OF THE SOUTH EXTENSION OF THE J. TIBBETS D.L.C. No. 47 IN SEC. 3, T. 25 S. R. 5 W

MARCH 1954 FRED L. DOW, C.E.

1" = 50'



NOT IN 12/1959 SET 1/2" IRON ROD IN PAVEMENT FOR CLAIM CORNER



A.J. Alexander

CS FILE FOLDER

CONTAINS

MORE

INFORMATION