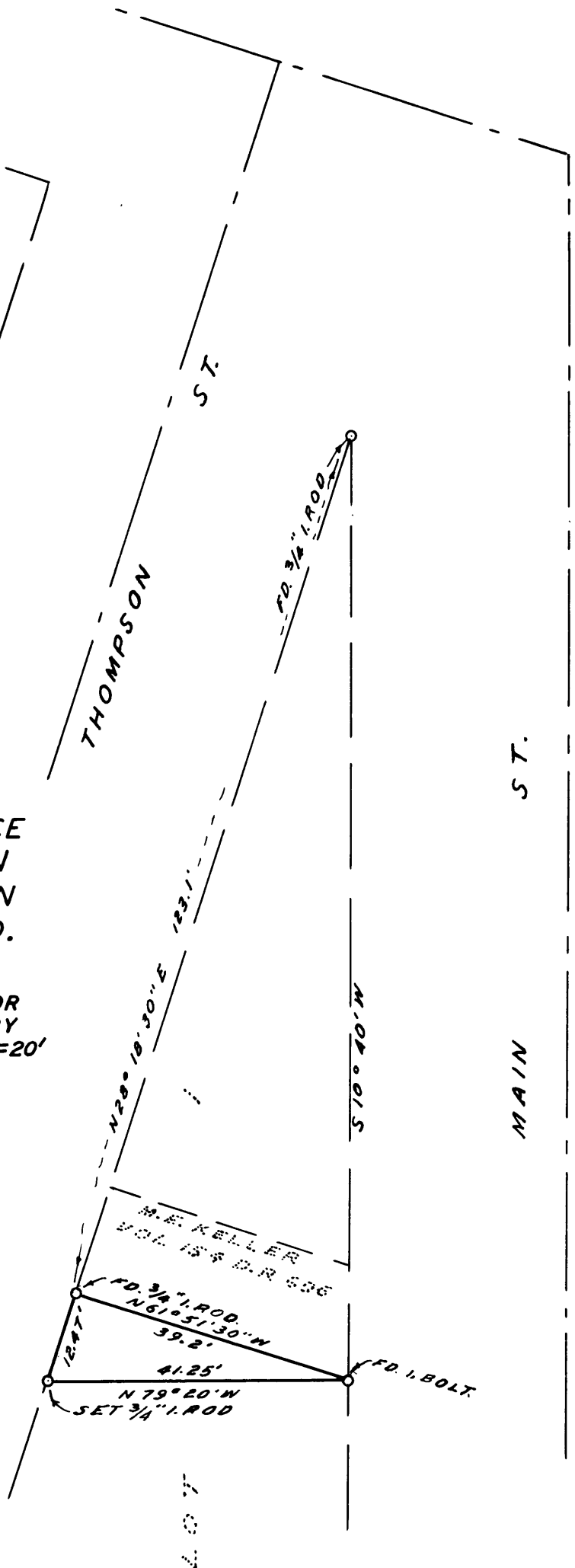


COUNTY SURVEYOR'S OFFICE
DOUGLAS COUNTY OREGON
SURVEY FOR DEED DESCRIPTION
LOT 1, BLOCK II, WAITE'S ADD.
TO ROSEBURG

FRED M. DARBY COUNTY SURVEYOR
SURVEYED JULY 1, 1959 BY
JAMES W. BYRON - DEPUTY SCALE 1"=20'
SURVEYED FOR M.E. KELLER

James W. Byron
JAMES W. BYRON
DEPUTY COUNTY SURVEYOR



COUNTY SURVEYORS FILE DATA
DO NOT REMOVE FROM OFFICE

CS FILE FOLDER

CONTAINS

MORE

INFORMATION