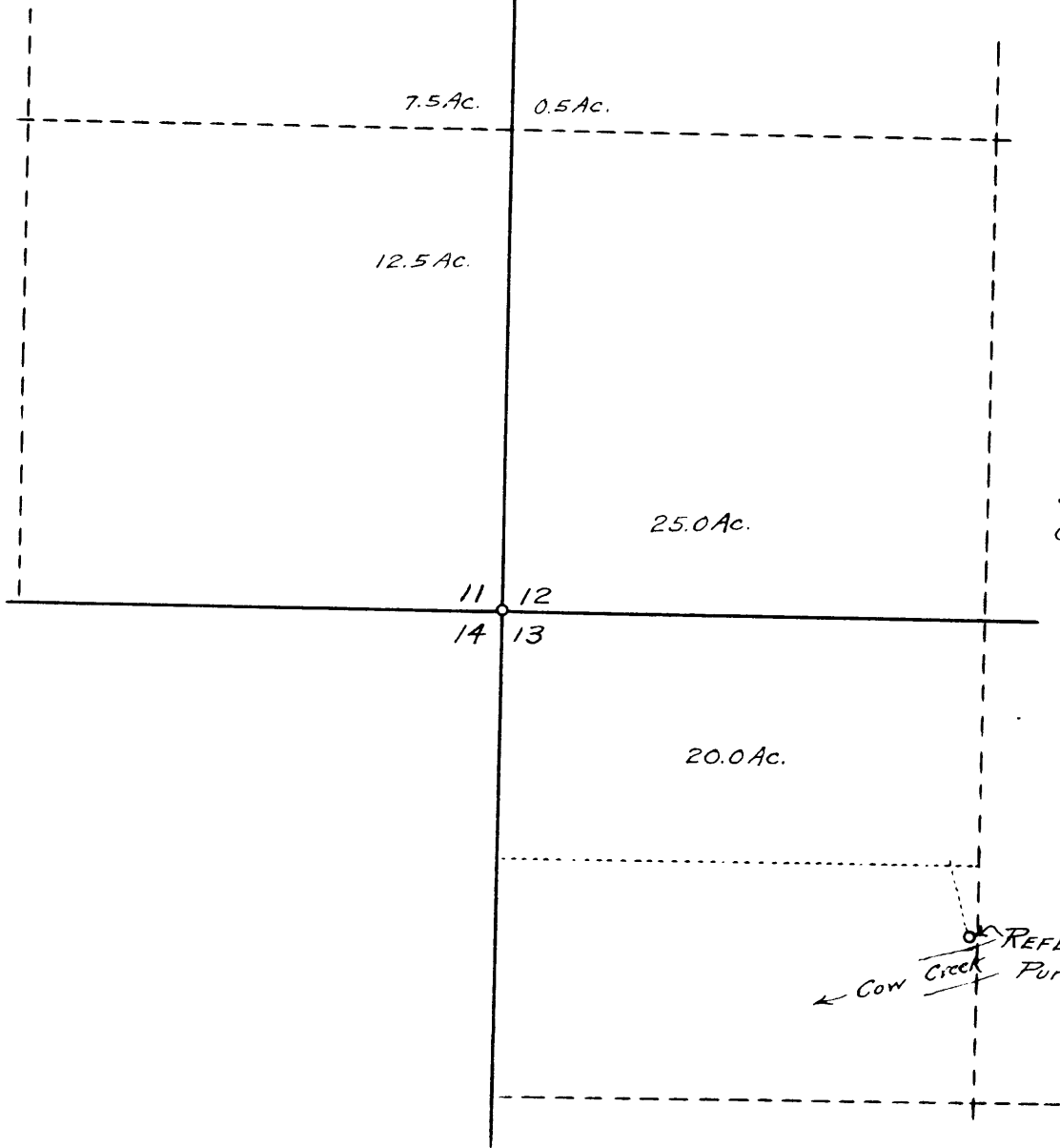


I, Geo. J. Wenderoth, of Azalea, Oregon, do hereby certify that this map was made from notes taken during an actual survey made by me on May 16, 1959; that the monument shown on this map consisting of a $\frac{3}{4}$ " steel rod is 1297.2 ft. East and 867.8 ft. South from the Corner to Sections 11-12-13 & 14, Township 32 South, Range 5 West of the Willamette Meridian.

Geo. J. Wenderoth



**COUNTY SURVEYOR'S OFFICE
DOUGLAS COUNTY, OREGON.**
Map to accompany application
for Water right of
DALE R. Johns
SECTIONS 11-12-13, T. 32 S., R. 5 W., W.M.
GEO. J. WENDEROTH, DEPUTY. May, 1959
Scale - 1" = 500 ft.

Geo. J. Wenderoth

C.S. File No. 79/150