

RENEW 13/18
29/19

T 22 S

ROW RSW

FOUND - ORIG. 18' N.W. 22' PARTLY ROTTEN
OAK STUMP N 80° E. 150.5' TO OPEN NEAR
BASE. I FIND GOOD SCRIBING "BT" ORIG.
24' N.W. 30' PARTLY ROTTEN OAK STUMP
N 98° W. 15.5' TO OPEN NEAR BASE AND
FIND GOOD SCRIBING "BT" I FIND 50'
DOWN OAK CHECKS BEARING SUBJECT
FOR ORIG. ST. BT I FIND NO TRACE
OF ORIG. SW BT

SET BRASS CAP AT CORNER MKD
COUNTY SURVEYORS OFFICE 1959.

S 18 19 T 22 S

SW 19

ROW RSW

NEW B.T.S.

9" DOUBLE W. OAK BEARS N 128° E. 120'
SCRIBED S 18 T 22 S R SW C.S. BT

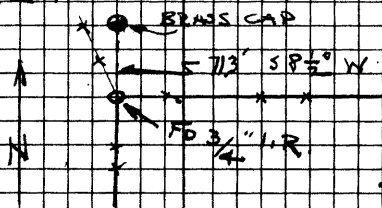
9" W. OAK BEARS S 57° E. 7.9'
SCRIBED S 19 T 22 S ROW C.S. BT

22" R. FIR BEARS N 25° W 19'
SCRIBED S 13 C.S. BT

NOTE - THIS BT SCRIBED ON ONE FACE
AND SCRIBED HIGH, ABOVE FENCE.

10" W OAK BEARS S 25° W 32.0'
SCRIBED S 18 T 22 S ROW C.S. BT

NOTE - I FIND 3/4" I.R. THIS - SEE
D S T W



4-10-59

DIETZEN NO. 385-6