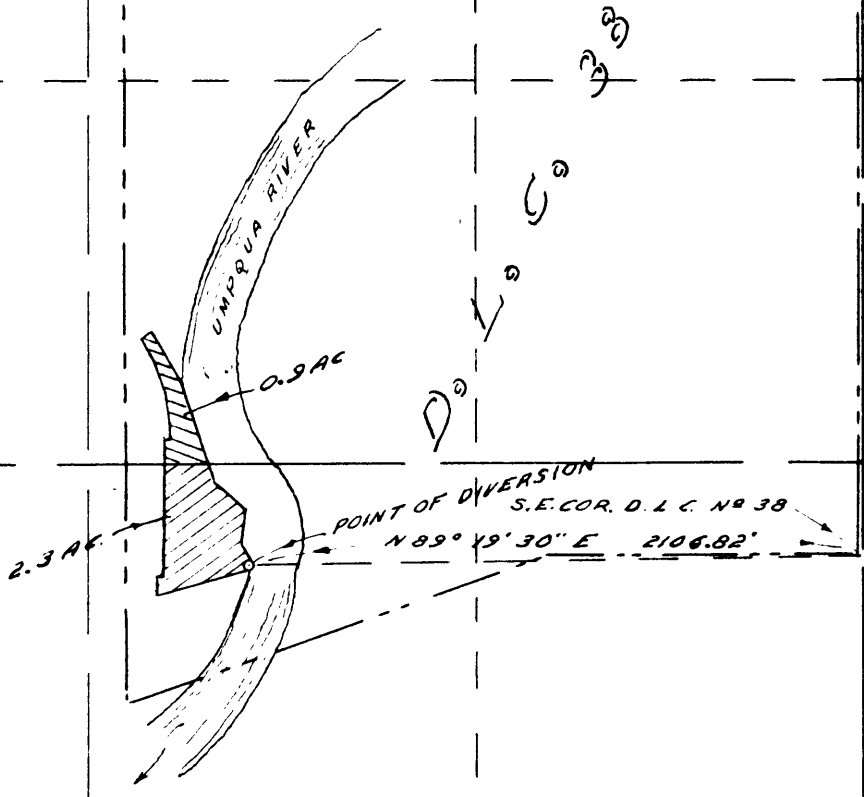


7



SCALE 1" = 660'



13

NOTE: THIS MAP COMPILED FROM INFORMATION FURNISHED BY THE CLIENT. NO SURVEY WAS MADE BY THIS OFFICE.

WATER RIGHT  
 FOR  
 VERN ZYSETT  
 SECTION 7 & 18 T 22S., R 9W. W.M.  
 OFFICE OF  
 FRED M. DARBY  
 COUNTY SURVEYOR, DOUGLAS CO.  
 ROSEBURG, OREGON

C. S. File No. 49/35

CS FILE FOLDER

CONTAINS

MORE

INFORMATION