

MAP
 SHOWING LOCATION OF
 RESIDENCE ON & BOUNDARIES OF
 LOT 5, BLOCK 2 RONALD HEIGHTS IN
 SECTION 11 & 12, T. 27 S., R 6 W. W. M.
 DOUGLAS COUNTY OREGON

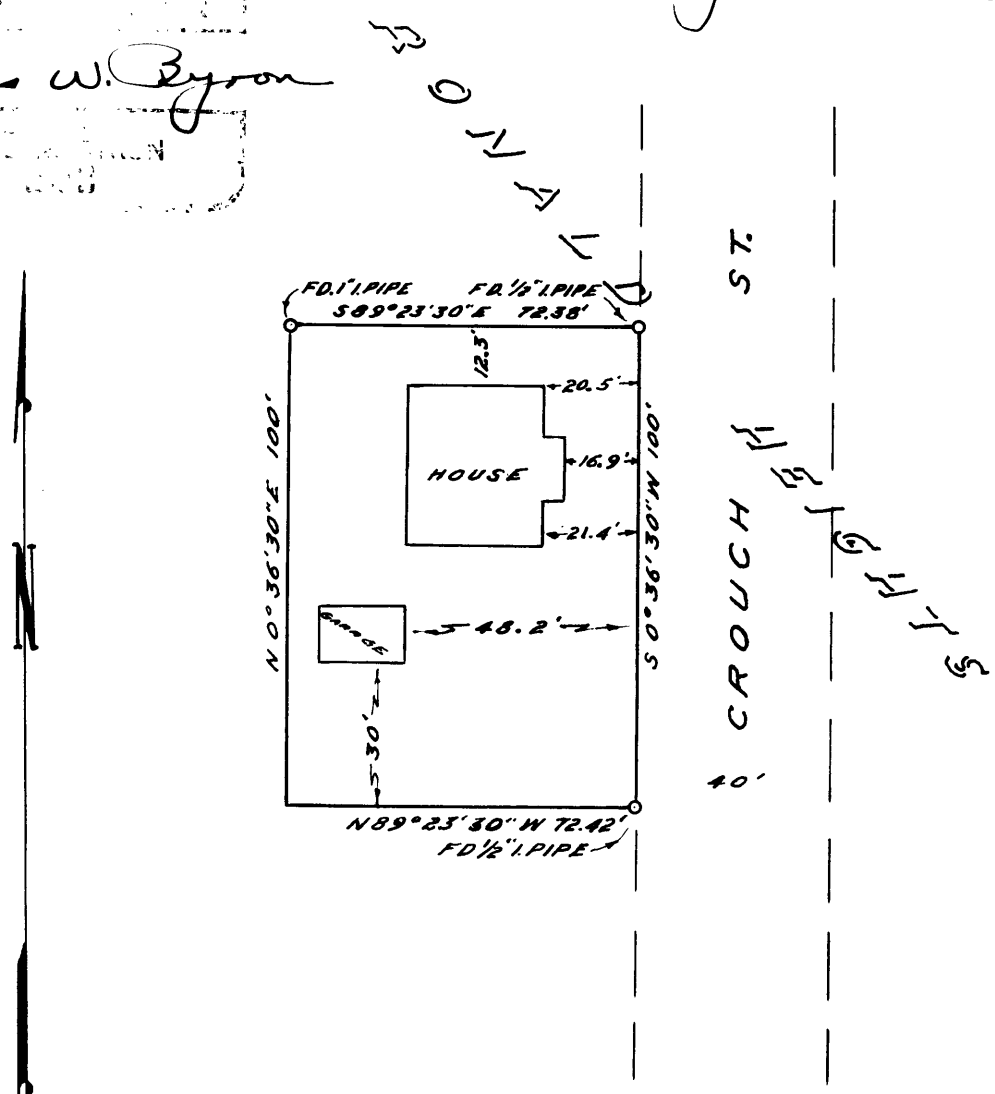
SURVEYED DEC 19, 1958

SCALE 1" = 40'

I HEREBY CERTIFY THAT I HAVE SURVEYED THE ABOVE DESCRIBED
 PROPERTY AND THAT THE IMPROVEMENTS SHOWN AND DESCRIBED HERE-
 ON ARE WITHIN THE PROPERTY LINES

James W. Byron
 JAMES W. BYRON
 DEPUTY COUNTY SURVEYOR

James W. Byron
 JAMES W. BYRON
 DEPUTY COUNTY SURVEYOR



COUNTY SURVEYORS FILE DATA
 DO NOT REMOVE FROM OFFICE

P

CS FILE FOLDER

CONTAINS

MORE

INFORMATION