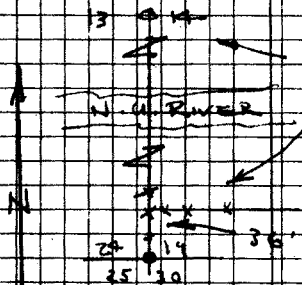


RENEW 2419  
 25/30 T 265

RSW RAW

FOUND - 3 1/2" X 1 1/2" I.P. AT CORNER  
 AS RECORDED BY NO  
 TRACES OF ORIG. BT FOUND. COR. IS  
 IN N.S. FENCE LINE WHICH SEEMS  
 TO LINE WITH RANGE LINE AND AS  
 PROJECTED THROUGH COR 13/18  
 ALSO COR. LOCATION CHECK CALL  
 TO FOOT OF HILL D.K.

FENCE LINE THUS



NOTE - VAR. 20 1/2°  
 AND BY COMPASS  
 RANGE LINE READS  
 N 3 1/2° W.

JET BRASS CAP AT CORNER MKD COUNTY  
 SURVEYORS OFFICE 1960

25/30 T 265

RSW RAW

NEW BTS.

10" B. OAK BEARS S 32° W  
 SCRIBED 525 T 265 RANGES BT

1 1/2" B. OAK BEARS N 72° E 6.1  
 SCRIBED 519 T 265 RAW CS BT

1 1/2" B. OAK BEARS N 8° W 19.6  
 SCRIBED 527 T 265 RSW CS BT

6" OAK BEARS S 2° E 80.5  
 SCRIBED 530 CS BT

VAR. 20 1/2°  
 JULY 13 - 1960  
 J. B. MC C. P.  
 C. S. File No. 49/125

DIETZEN NO. 3855-6