

Ray Hodson 1953
 Ray Hodson 1958
 Ray Wilder 1958

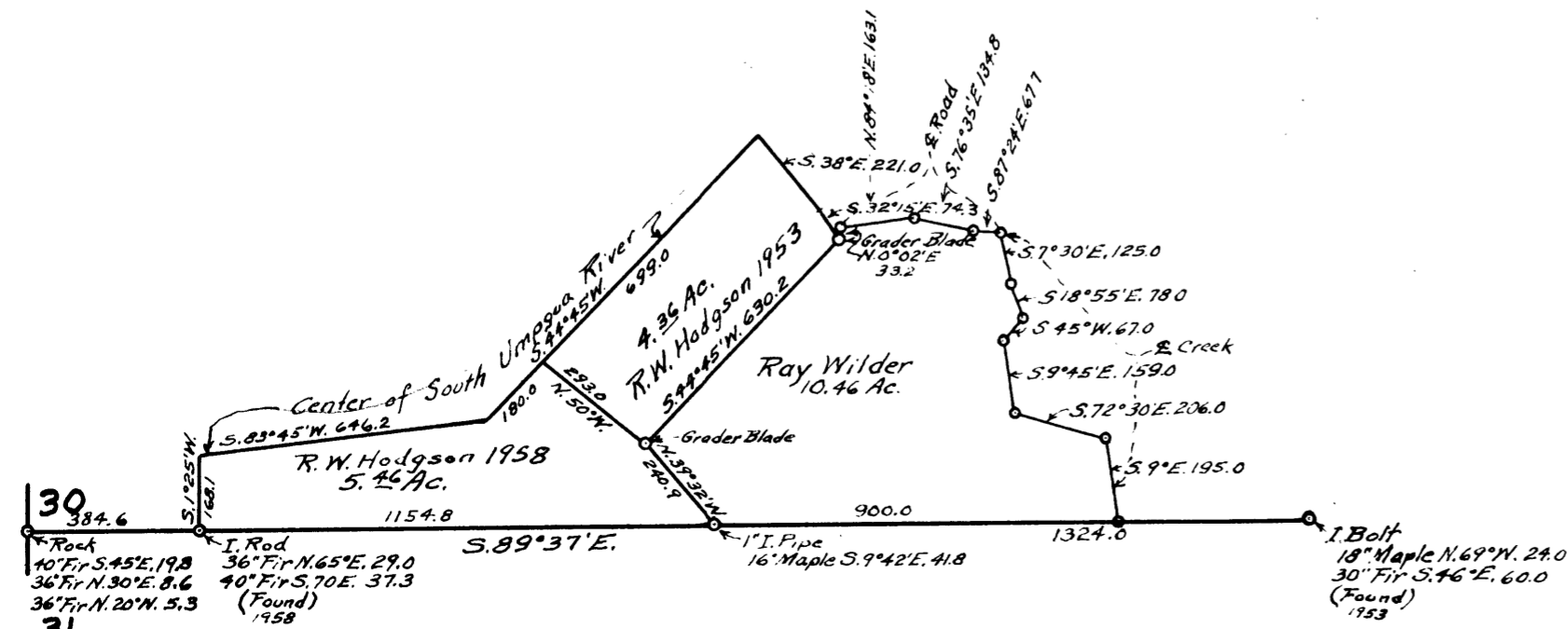
COUNTY SURVEYOR'S OFFICE
 DOUGLAS COUNTY, OREGON.
 Surveys in
 SECTION 30, T. 30 S., R. 3 W., W.M.

Geo. J. W. Underwood

19
 30
 1 1/2" I. Pipe
 12" Fir S. 72° 30' W. 50.2
 10" Chin. N. 31° 30' W. 16.7
 20" Mad. N. 40° E. 21.7
 30" Mad. S. 45° E. 26.4

2 1/2" Boiler Tube
 14" Fir N. 53° E. 42.9
 30" Fir S. 80° E. 25.7

COUNTY SURVEYORS FILE DATA
 DO NOT REMOVE FROM OFFICE



FILED
 RECEIVED

NOV 24 1958

COUNTY SURVEYOR
 DOUGLAS COUNTY, ORE.

e.s. No. 49/113-2