

COUNTY SURVEYORS FILE DATA  
DO NOT REMOVE FROM OFFICE

COUNTY SURVEYOR'S OFFICE  
DOUGLAS COUNTY, OREGON.  
Surveys in  
SECTION 30, T.30S., R.3W., W.M.  
Geo. Wenderoth.

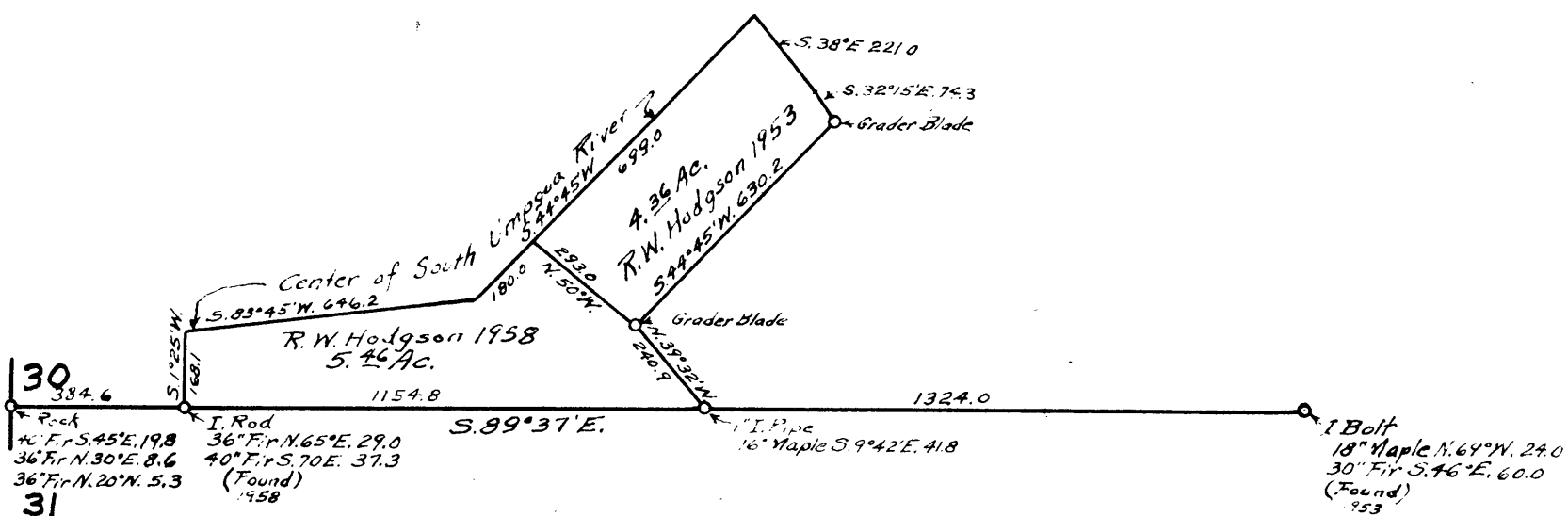
REGISTERED  
OREGON  
LAND SURVEYOR

*Geo. J. Wenderoth*

MARCH 19, 1944  
George J. Wenderoth  
5

19  
30  
1 1/2" I.P. Pipe  
12" Fir S. 72° 30' W. 50.2  
10" Chin. N. 31° 30' W. 16.7  
20" Mod. N. 40° E. 21.7  
30" Mod. S. 45° E. 26.4

2 1/2" Boiler Tube  
14" Fir N. 53° E. 42.4  
30" Fir S. 80° E. 25.7



FILED  
RECEIVED

SEP 12 1958

COUNTY SURVEYOR  
DOUGLAS COUNTY, ORE.  
INCOMPLETE — *JP*