

RENEW

T 29 S

6 | 5 — 305 R/W

FOUND - ORIG 14" NOW 26" HEMLOCK  
 N 21° E 211' PREVIOUSLY OPENED  
 FACE SHOWS GOOD SCRIBING S 32 T 29 S  
 R/W " ORIG 36" NOW 46" R/FIR S 30 W  
 251' SHOWS GOOD BARK SCRIBING. I FIND  
 REMAINS OF CEDAR STUMP THAT CHECKS  
 BEARING & DIST FOR ORIG SE BT

SET BRASS CAP AT CORNER MWD  
 S 32 T 29 S R/W  
 S 6 S 5 T 30 S R/W

COUNTY SURVEYORS OFFICE 1958

NEW BTD.

7" HEMLOCK BEARS S 26 1/2° E 331'  
 SCRIBED T 30 S S 5 R/W C S BT

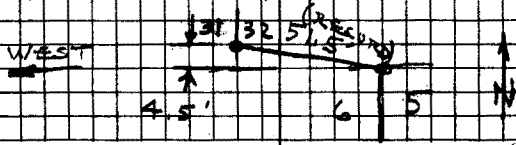
4" CEDAR BEARS S 11° W 431'  
 SCRIBED S 6 C S BT

RENEW 531/532 T 29 S R/W  
 S 6 T 30 S

FOUND - ORIG 15" NOW DEAD 24" HEMLOCK  
 N 33° E 172' I OPEN & FIND GOOD SCRIBING  
 BT. ORIG 30" NOW 30" PARTLY ROTTED  
 FIR SNAG S 50° E 201' I FIND STUMP HOLDS  
 THAT CHECK BEARING & DIST FOR SW  
 & NW BTD.

DROVE 3/4" X 30" ROD AT CORNER  
 NEW BTD. 12" HEMLOCK BEARS N 2° W 796'  
 SCRIBED S 31 T 29 S R/W C S BT  
 16" HEMLOCK BEARS S 61° W 385'  
 SCRIBED S 6 T 30 S R/W C S BT

NOTE - CORRS. THIS



10/1958

C. S. File No 99/100-34

DIETZGEN NO. 385-6