

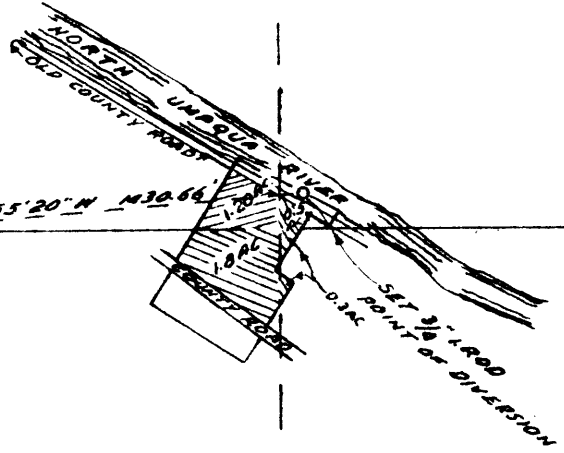
SCALE 8" = 1 MI.

13

13

24

58°55'20" N 130.66'



24

WATER RIGHT
FOR
HARRY YOUNG
SECTION 13 & 24 T26S, R4W, W.M.
OFFICE OF
FRED M. DARBY
COUNTY SURVEYOR, DOUGLAS COUNTY
ROSEBURG, OREGON

CS FILE FOLDER

CONTAINS

MORE

INFORMATION