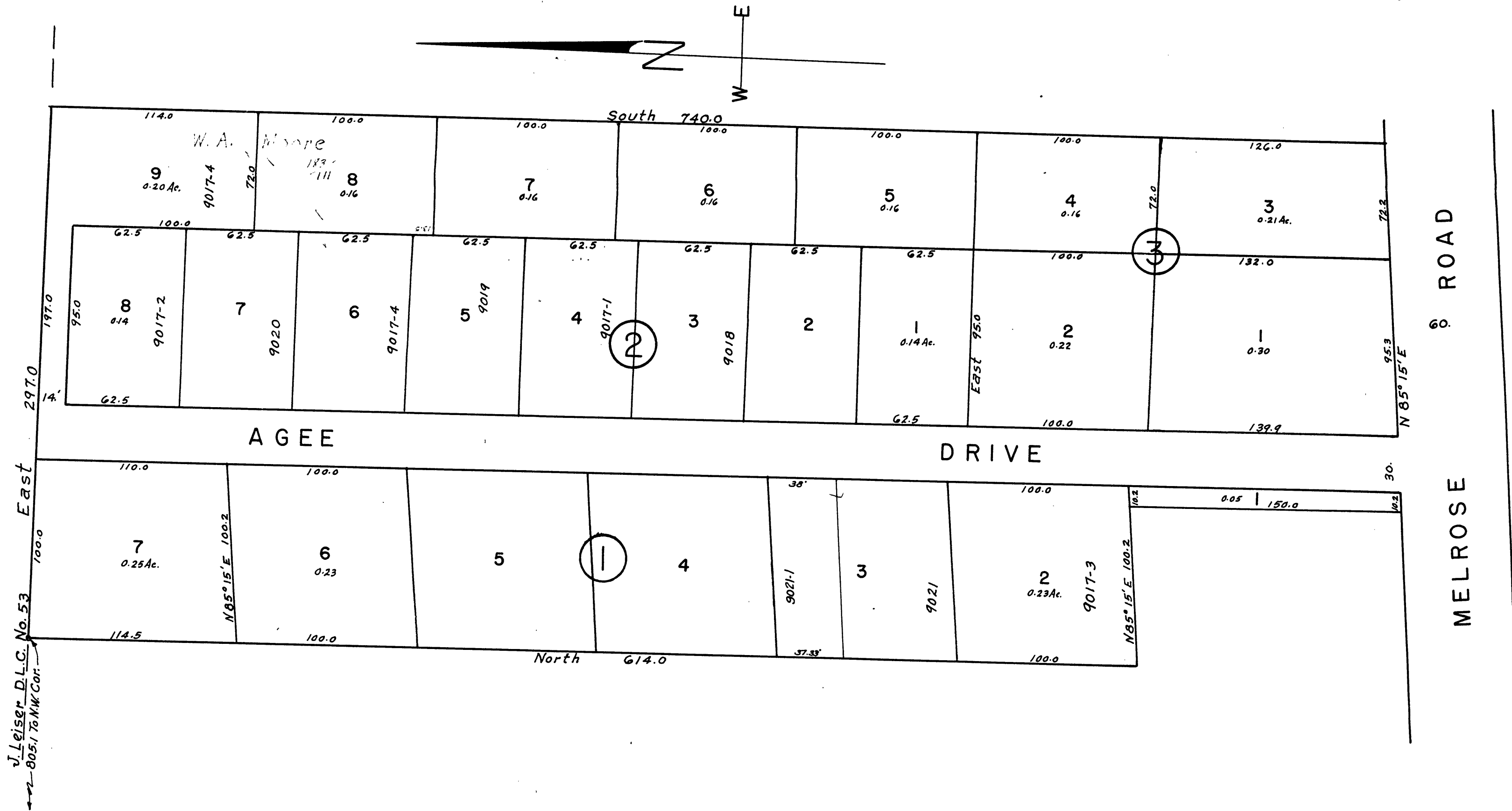


FILED

Date: 3-20-76 By: HP
This survey consists of:
Map: C.S. 49/81-3
Narrative:
Corner Rpt:

DOUGLAS COUNTY
SURVEYOR



V. Leiser, D.L.C. No. 53
805/170 NW Cor.

UNRECORDED AGEE TRACT
COUNTY ASSESSORS OFFICE
TRACED FROM PRINT IN
POSSESSION OF DOUGLAS ABSTRACT
PART OF LOT (7) BROWNS ESTATE
SEC. 14 T. 27 S.R. 6 W.W.M.
SCALE 1" = 50'