

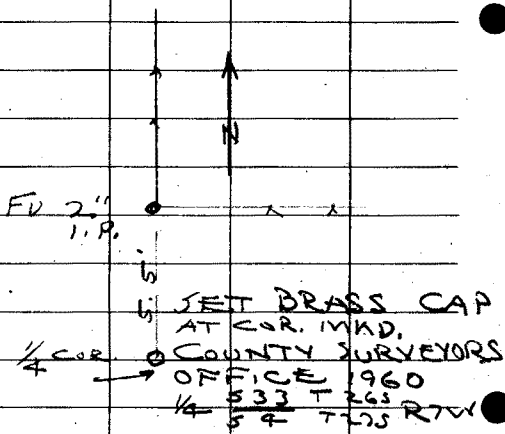
RENEW $\frac{1}{4}$ COR. 33 T 26 S R 7 W
4 T 27 S R 7 W

FOUND - ORIG. 2.0' Now 3.4"

LAUREL SNAG S 87° W 44.9'

WE OPENED & FIND GOOD SCRIBING
"T" NO TRACE OF ORIG. NE
BT FOUND.

COR. THUS



NO TREES NEAR SUITABLE

FILED
FOR BTS

RECEIVED

JAN 20 1960

DEC 19 - 1960

DEC 13 1960

COUNTY SURVEYOR
GLAS COUNTY, ORE.

J. B.
M. G.
C. P.

CS 49/79 - 75

✓✓✓