

SET 3 BRASS CAP AT W 1/4 COR.
 5' 10" NORTH OF 1/2 COR. 4 T 30 S R 4 W
 FROM WHICH 39" B. OAK BEARS N 16 1/2° W 139.8
 SCRIBED W. C. 1/4 S 4 CS BT
 32" B. OAK BEARS N 65° E 291.3'
 SCRIBED W. C. 1/4 S 4 CS BT

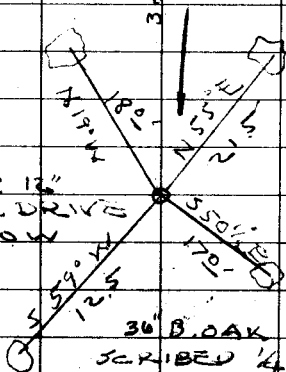
XX
 WC MARKED BRASS CAP
 510' SOUTH TO 1/2
 59 T 30 S R 4 W
 59
 COUNTY SURVEYORS
 OFFICE 1962

JAN 31 - 1962
 J. B.
 D. M.
 J. P.
 VAR 2.0° E

99902
 8.30
 213.8
 510.0' NORTH
 99391
 6.35
 300.0

394.0
 211.0
 109.5

HOLES DUG FOR
 NEW PRUNE TREES



FD 12" I.P. 12"
 ABOVE WE DRIVE
 TO 12" BELOW

1/4 COR. 4
 9

36" B. OAK N 9° W 489.5'
 SCRIBED 1/4 S CS

36 OAK S 83° W 668.7

+ *

C.S. No. 42/67-36