

RENEW ¹³⁷/₁₃₁₈ T 285

R6W R5W

FOUND - BOTH ORIG. BTS.

ORIG. 10" NOW 30" B. OAK 588°W

250.8' SHOWS GOOD SCAR I DO

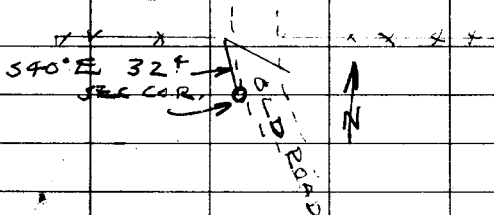
NOT OPEN. ORIG. 30" NOW LARGE

DOWN & PARTLY ROTTED OAK

N 48 1/2° W 394.7 WE OPEN & FIND

GOOD REVERSE SCRIBING "BT"

FENCE THUS



SET BRASS CAP AT COR. MKD.

COUNTY SURVEYORS OFFICE 1961

512/57 T 285

513/518

R6W R5W

NEW BTS.

32" B. OAK BEARS N 76° W 106.5'

SCRIBED 512 T 285 R6W S 12 CS BT

13" B. OAK BEARS S 81° W 135.3'

SCRIBED 513 T 285 R6W CS BT

NO TREES NEARBY NE & SE

VAR 20 1/2' NOV. 17-61

+ * O ✓

J. B. J. P.
D. M.

CS 49/64-32

REPORTED A BRASS CAP BROUGHT IN
By D. GARRETT
1961 T28 - R5+6W.

R6W

S 12 | S 7 R5W
S 13 | S 18

NEW TREES 32" B. OAK N 76 W 106.5'
13" " " S 81 W 135.3'

ORIG. 30" B. OAK S 88 W 250.8'
Good SCAR DID NOT OPEN

30" DOWN & ROTTED OAK
N 48 1/2 W 394.7'
OPENED GOOD SCRIBING

NO TREES NEAR TO N.E OR S.E.

RESET BRASS CAP
FLUSH WITH SURFACE
D. GARRETT
4-1962
C.P. 49/64-32