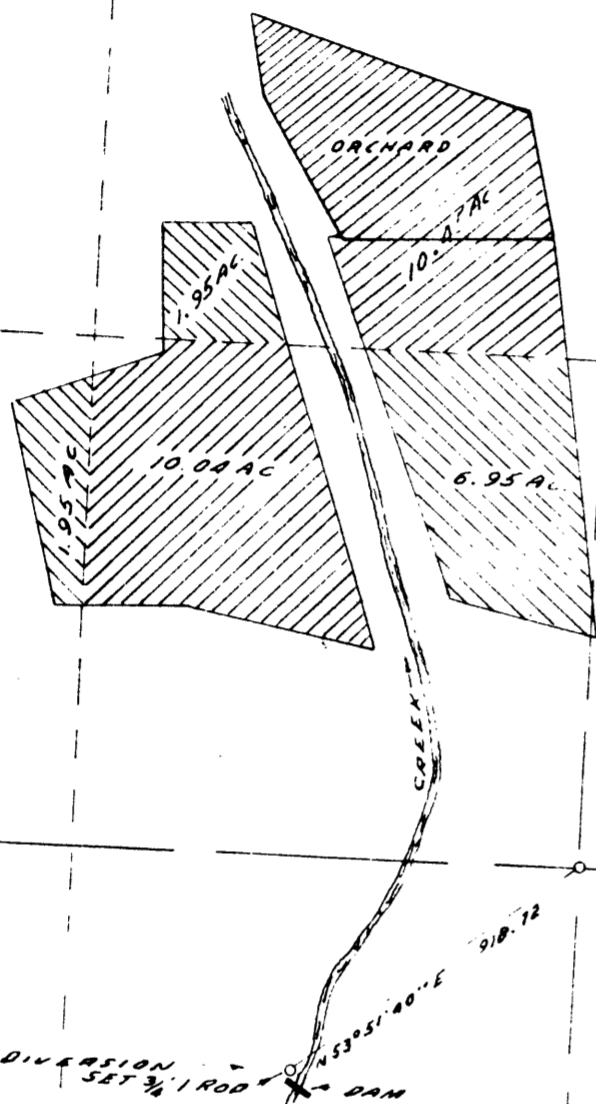


35



SCALE: 1" = 500'

POINT OF DIVERSION SET 1/4 1 ROD DAM

1/4 CORNER COMMON TO SEC 36

I, JAMES W. BYRON, OF ROSEBURG, OREGON DO
 HEREBY CERTIFY THAT THIS MAP WAS MADE FROM NOTES
 TAKEN DURING AN ACTUAL SURVEY MADE JULY 2 1937 BY ME;
 THAT THE MONUMENT SHOWN ON THIS MAP CONSISTING OF A
 1/4" X 30" IRON ROD, IS S 53° 51' 40" W 918.72' FROM THE 1/4 CORNER
 COMMON TO SECTIONS 35 T30S R6W N.M.

James W. Byron
 JAMES W. BYRON

REGISTERED
 OREGON
 LAND SURVEYOR

James W. Byron
 NOV. 6, 1933
 JAMES W. BYRON
 303

WATER RIGHT
 FOR
 H. W. HILES
 SECTION 36 T30S, R.6W W.M.

OFFICE OF
 FRED M. DARBY
 COUNTY SURVEYOR DOUGLAS COUNTY
 ROSEBURG OREGON

DO NOT SELL
 ONLY COPY

COUNTY SURVEYORS FILE DATA
 DO NOT REMOVE FROM OFFICE

MAP FILE 11-5-37

CS FILE FOLDER

CONTAINS

MORE

INFORMATION