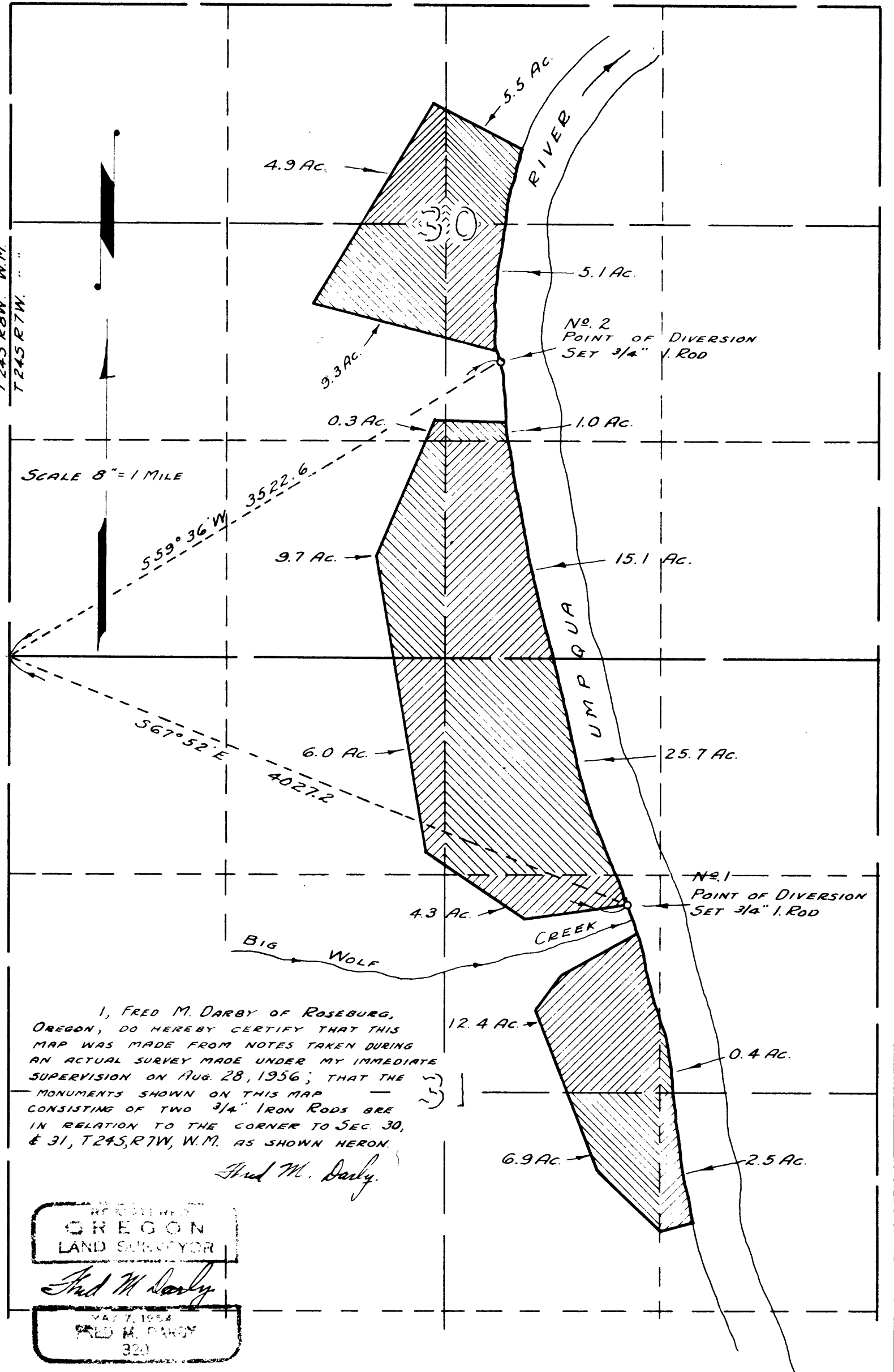


T 245 R 7W. W.M.
T 245 R 7W. . . .

SCALE 8" = 1 MILE



I, FRED M. DARBY OF ROSEBURG, OREGON, DO HEREBY CERTIFY THAT THIS MAP WAS MADE FROM NOTES TAKEN DURING AN ACTUAL SURVEY MADE UNDER MY IMMEDIATE SUPERVISION ON AUG. 28, 1956; THAT THE MONUMENTS SHOWN ON THIS MAP CONSISTING OF TWO 3/4" IRON RODS ARE IN RELATION TO THE CORNER TO SEC. 30, E 31, T245, R7W, W.M. AS SHOWN HERON.

Fred M. Darby

RECEIVED
OREGON
LAND SURVEYOR

Fred M. Darby

AUG 27 1954
FRED M. DARBY
320

**WATER RIGHT
FOR
ELMA M. DUNCAN
SECTIONS 30, 31, T245, R7W, W.M.**

OFFICE OF
FRED M. DARBY
COUNTY SURVEYOR, DOUGLAS COUNTY,
ROSEBURG, OREGON

C. S. File No. 47/147

CS FILE FOLDER

CONTAINS

MORE

INFORMATION