

**COUNTY SURVEYORS FILE DATA
DO NOT REMOVE FROM OFFICE**

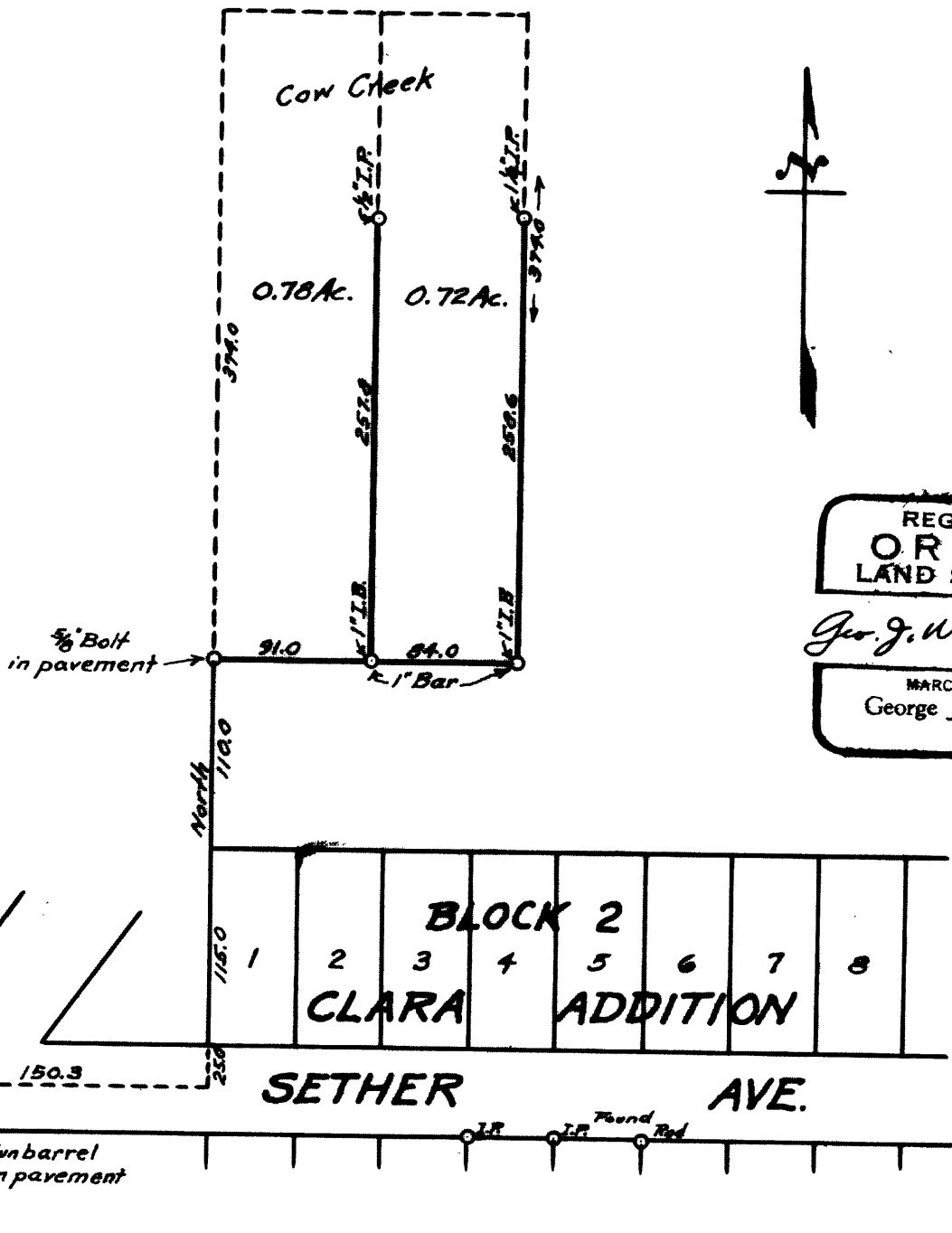
FILED

RECEIVED

AUG 31 1956

COUNTY SURVEYOR
DOUGLAS COUNTY, ORE.

**COUNTY SURVEYOR'S OFFICE
DOUGLAS COUNTY, OREGON.
SURVEY FOR
P.J. CONVERSE
CITY OF GLENDALE
SECTION 4, T. 33 S., R. 6 W., W.M.
GEO. J. WENDEROTH, DEPUTY. AUG. 25, 1956.
SCALE 1" = 100 ft.**



REGISTERED
OREGON
LAND SURVEYOR

Geo. J. Wenderoth

MARCH 18, 1944
George J. Wenderoth
5