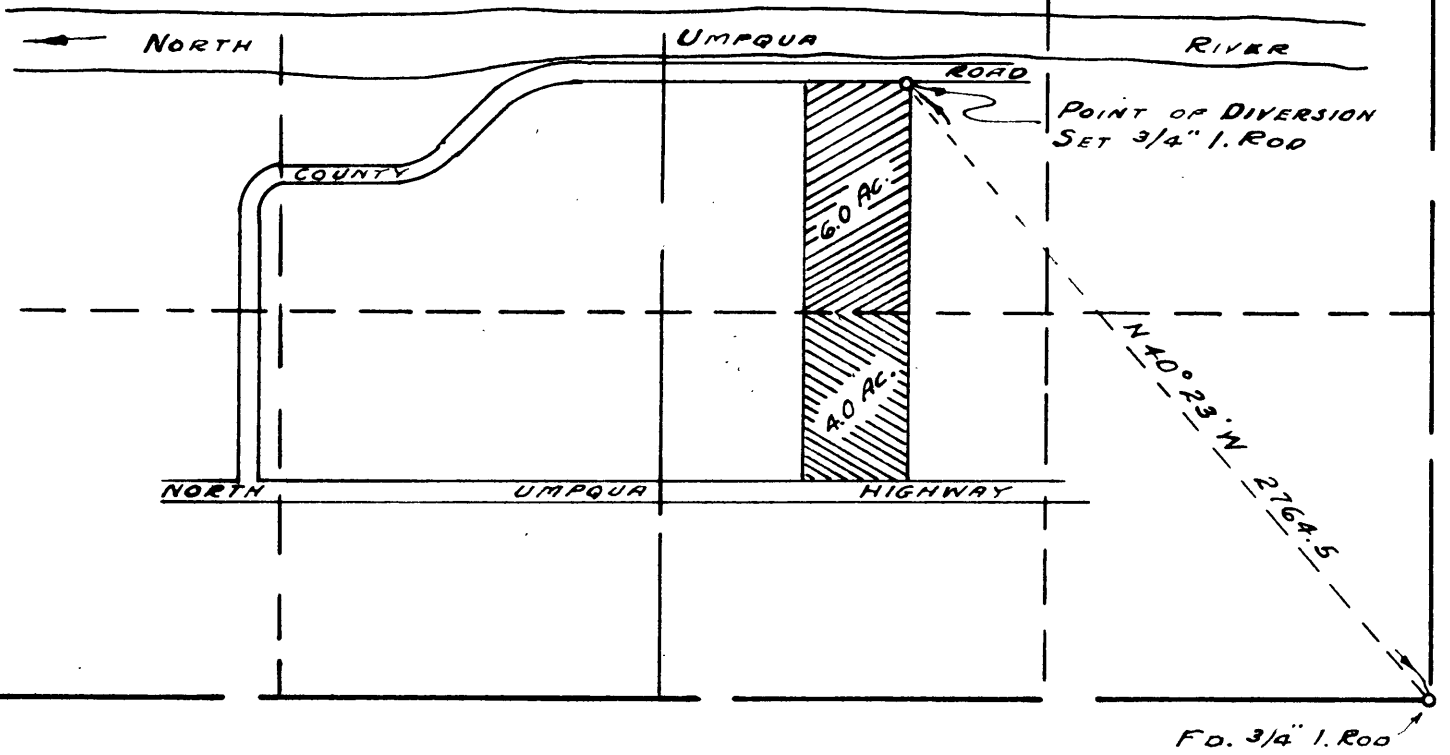


SCALE 8" = 1 MILE



WATER RIGHT
FOR
HOWARD CROOK
SECTION 14, T26S, R4W, W.M.

OFFICE OF
FRED M. DARBY
COUNTY SURVEYOR, DOUGLAS COUNTY
ROSEBURG, OREGON

CS FILE FOLDER

CONTAINS

MORE

INFORMATION