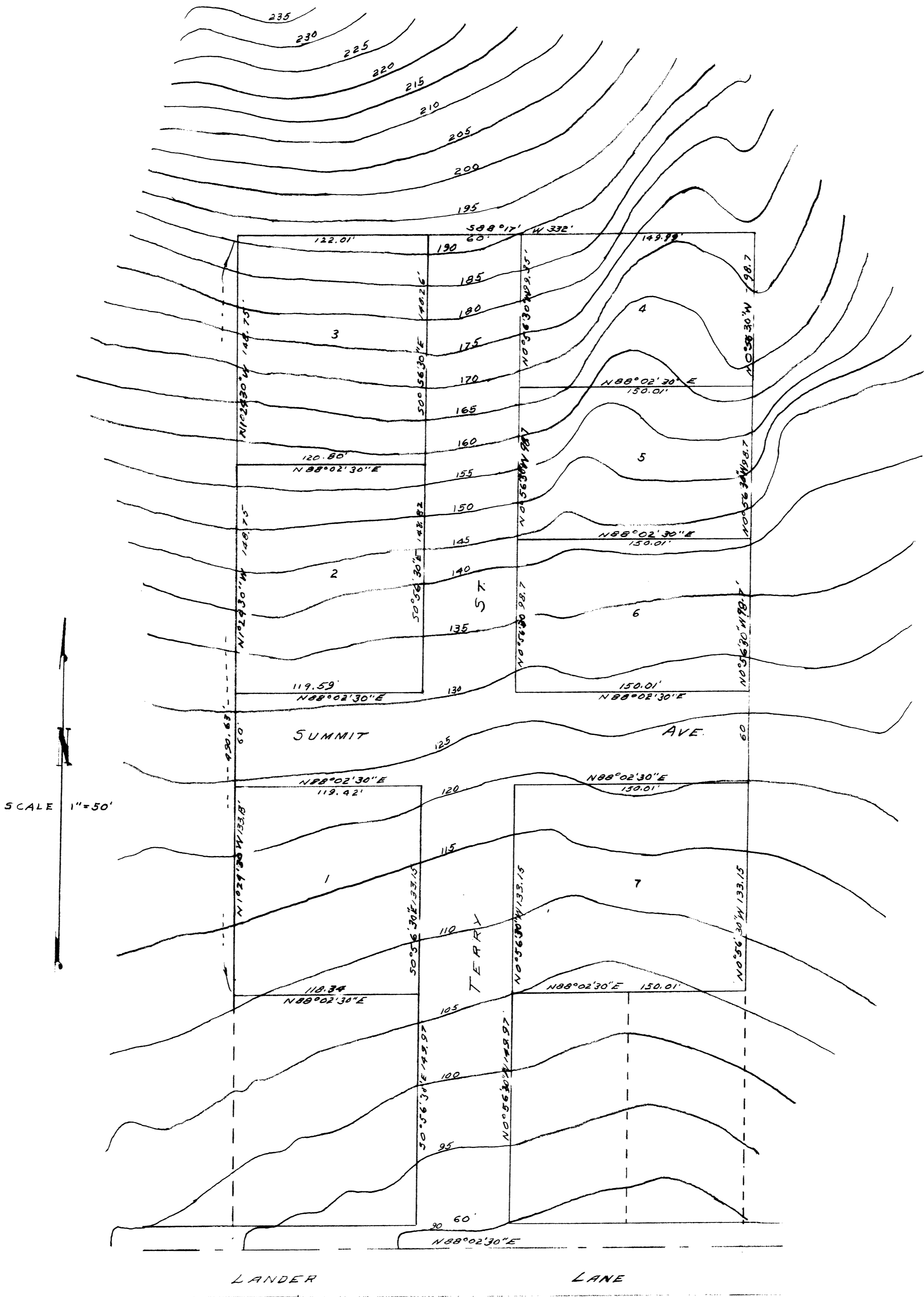


See C.S File 41/273
40/125
45/78
32/37
34/17

47/103
✓

THIS JOB NOT COMPLETED.
NO FINAL MONUMENTS SET
NO TRACING.

11/11



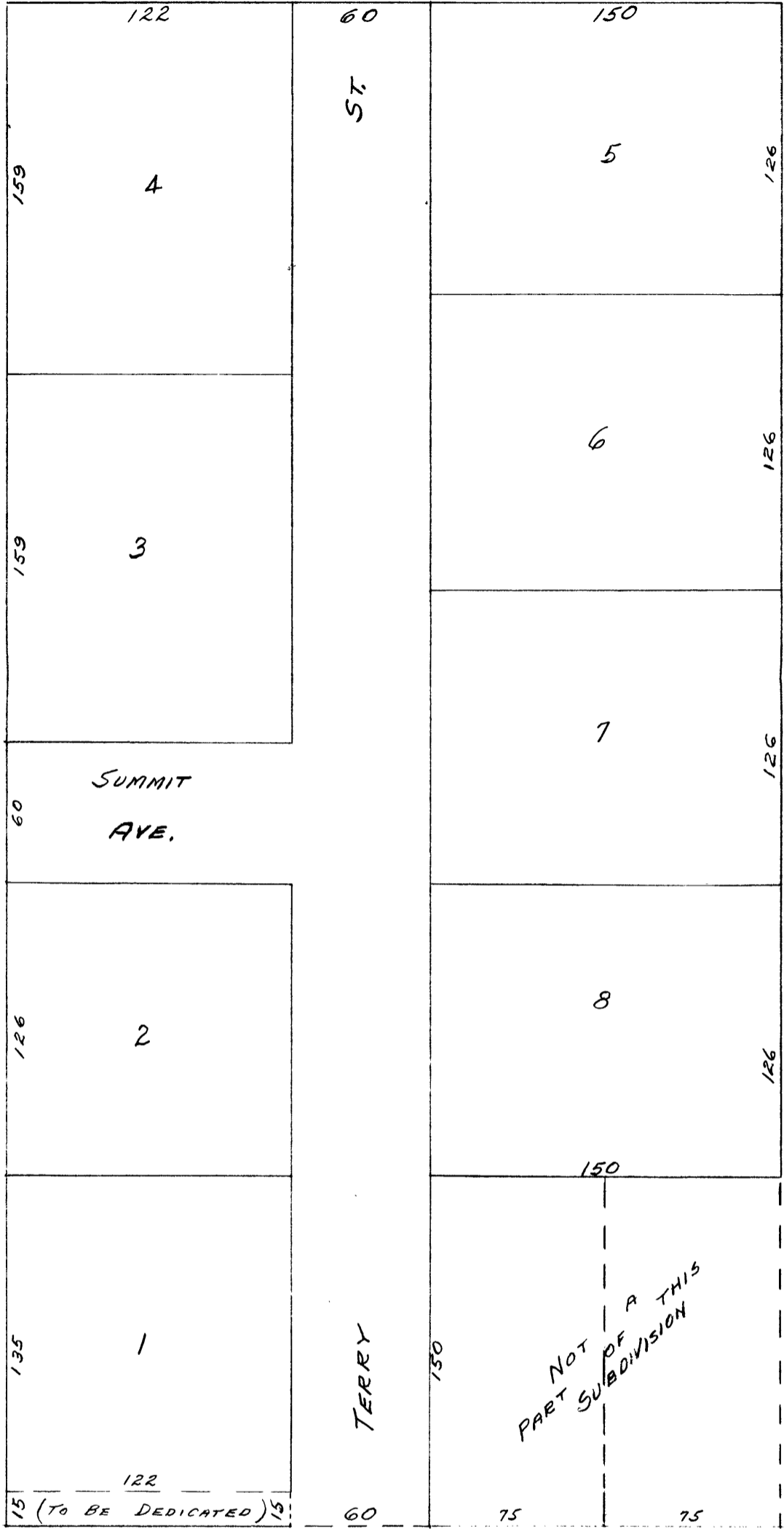
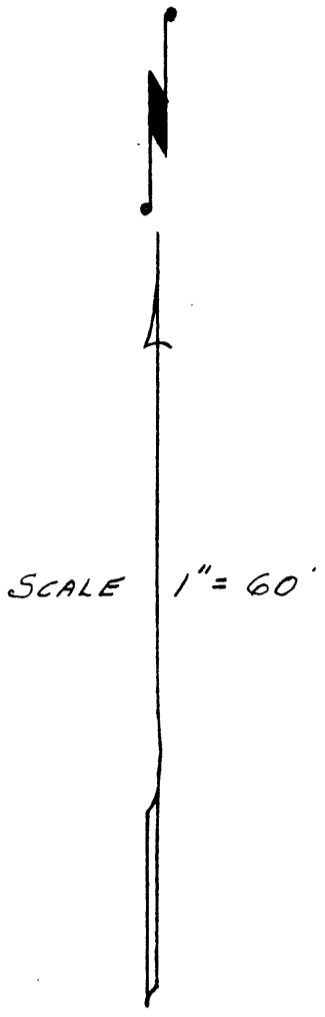
PROPOSED
GOODWIN SUBDIVISION

PART OF LOT 5, FISK FRUIT
FARM SEC. 10, T28S, R6 W, WM.

COUNTY SURVEYOR'S OFFICE
DOUGLAS COUNTY OREGON

OWNERS { THOMAS E. GOODWIN
DIXIE MEGLOSSON

COUNTY SURVEYORS FILE DATA
DO NOT REMOVE FROM OFFICE



30 LANDER (PREVIOUSLY DEDICATED) LANE 30

OF LOT 5, FISK FRUIT FARM SEC. 10, T28S, R6W, WM.

COUNTY SURVEYOR S OFFICE DOUGLAS COUNTY OREGON

COUNTY SURVEYORS FILE DATA DO NOT REMOVE FROM OFFICE

OWNERS { THOMAS E GOODWIN DIXIE MESSER

C. S. File No. 47/103-1

CS FILE FOLDER

CONTAINS

MORE

INFORMATION