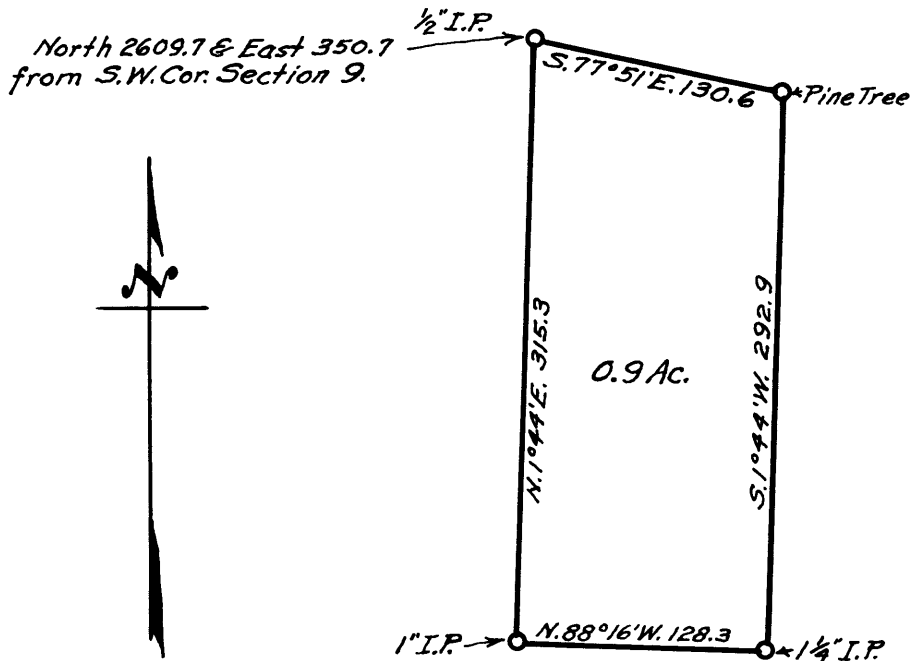


Send 2 points
File tracing



COUNTY SURVEYOR'S OFFICE
DOUGLAS COUNTY, OREGON.

SURVEY FOR

R. K. PARIS

SECTION 9, T. 30 S., R. 4 W., W.M.

GEO. J. WENDEROTH, DEPUTY. July 1956

SCALE 1" = 100'

REGISTERED
OREGON
LAND SURVEYOR

Geo. J. Wenderoth

MARCH 10, 1944
George J. Wenderoth
5

COUNTY SURVEYORS FILE DATA
DO NOT REMOVE FROM OFFICE

Sec. & File No. 47/97