

**COUNTY SURVEYOR'S OFFICE
DOUGLAS COUNTY, OREGON.**

**SURVEY FOR
PETE ULAM
SECTION 21, T. 30 S., R. 4 W. W.M.
GEO. J. WENDEROTH, DEPUTY
MAR. 1956**

SCALE 1" = 200 FT.

Northwest Corner of N.E. 1/4 of
N.E. 1/4 of Sec. 21 Set by F. Cain.
Gunbarrel
24° Fir N. 14° E. 28.8
16° Pine S. 14° 30' E. 89.8

570.0

South

739.7

3/4 I.P. S. 87° 51' E. 749.2

3/4 I.P.

S. 13° E. 195.1

S. 17° 50' E. 94.5

S. 28° 46' E. 84.4

S. 40° 14' E. 207.7

S. 45° 10' E. 89.9

S. 63° 50' E. 256.7

3/4 I.P.

33.45 Ac.

N. 56° 01' W. 596.2
Center South Unimproved
River

N. 55° 01' W. 766.5
River

789.9

S. 23° 43' W.

3/4 I.P.

894.3

REGISTERED
OREGON
LAND SURVEYOR

Geo. J. Wenderoth

MARCH 10, 1944
George J. Wenderoth
5

STATE

HIGHWAY



FILED
RECEIVED

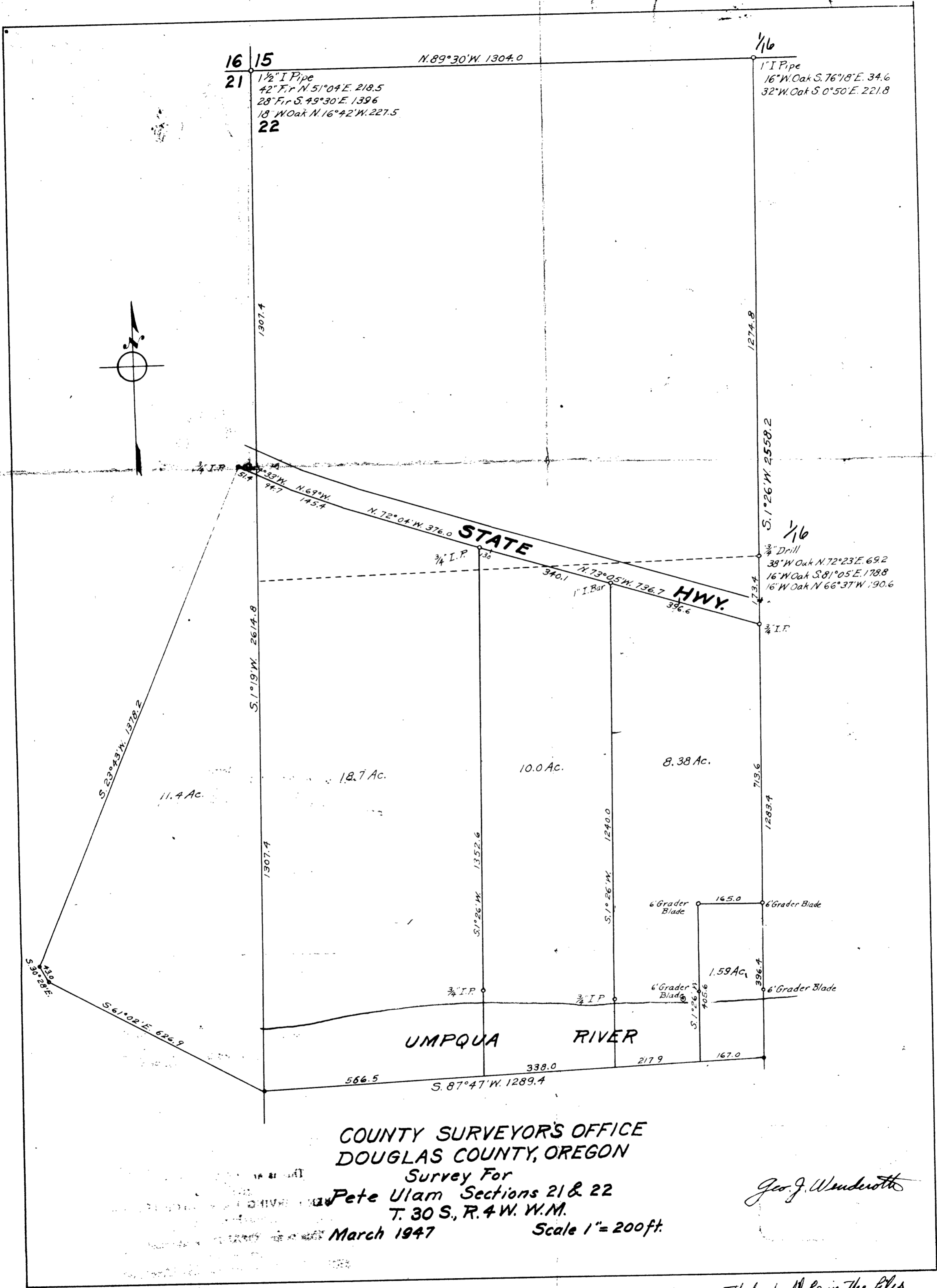
APR 30 1956

COUNTY SURVEYOR
DOUGLAS COUNTY, OREG.

N. 55° 50' W. 103.8

**COUNTY SURVEYORS FILE DATA
DO NOT REMOVE FROM OFFICE**

C.S. File No. 47/72



COUNTY SURVEYORS OFFICE
DOUGLAS COUNTY, OREGON

Survey For
Pete Ulam Sections 21 & 22
T. 30 S., R. 4 W. W.M.
March 1947
Scale 1" = 200ft.

Geo. J. Wenderoth

This is the map that should be in the files
& corners in red recorded these corners
were renewed by me.
This is an extra copy no tracing for it
as was filed before.

C.S. File No. 41/72