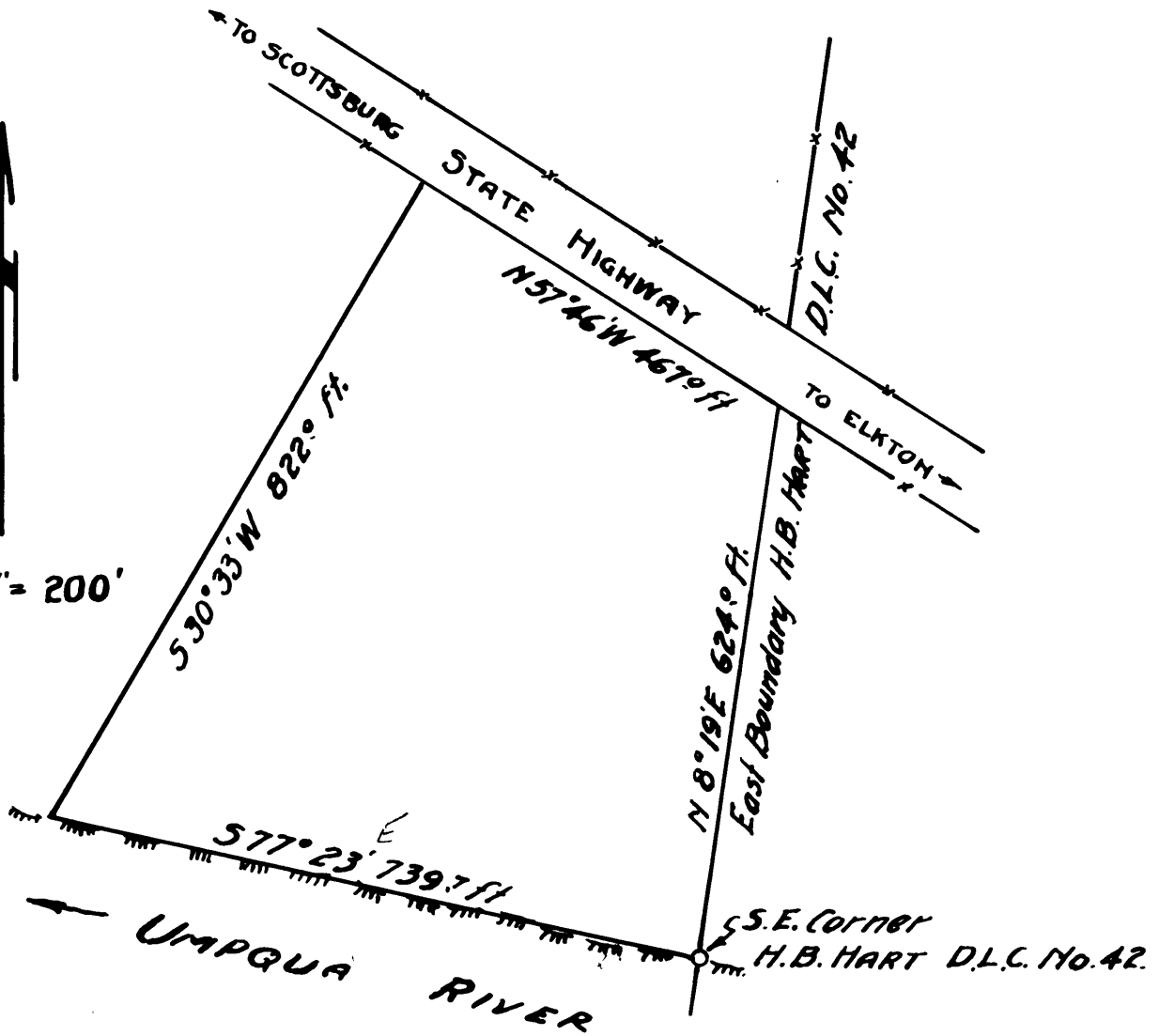




SCALE 1" = 200'



TRACT SOLD TO  
 ELKTON SCHOOL DISTRICT  
 BEING PART OF  
 H. B. HART D. L. C. No. 42.  
 T. 22. S., R. 7 W., W. M.

COUNTY SUPERVISOR, THE TRACT  
 DO NOT REMOVE FROM RECORD  
 BEN. B. IRVING,  
 CIVIL ENGINEER & SURVEYOR.  
 ROSEBURG, OREGON.

CS FILE FOLDER

CONTAINS

MORE

INFORMATION