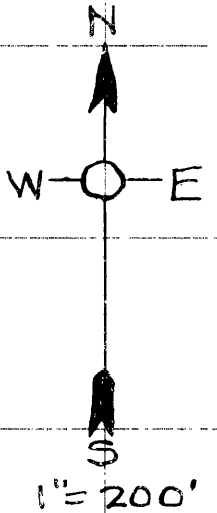


AUSTIN 302 ROAD
 10:11 S. 89-31E 529.64

ZELLA MAY GREEN LANDS
 T. 28-6



DESCRIPTION - for Church, later used for DEED TO STORE. To wit: Beginning at a $\frac{3}{4}$ " x 36" I. Pipe on N. Line of School Dist. No. 5 said pt. being S. 0°-11'E. 2320.1 ft. & East 620 ft distant from Cor. Secs 2-3-10-11, T. 28-6, thence East along N. Line School Dist. 5, 200 ft. to W. Line Co. Rd. 16, thence N. 8°-14' W. 151.6 to $\frac{1}{2}$ " x 48" I. Pipe Thence West 178.3 ft. to a $\frac{1}{2}$ " x 36" I. Pipe, Thence South 150 ft. to place of beginning and cont. 0.65 of an acre of land more or less all in Sec. 11 above Twp & Range

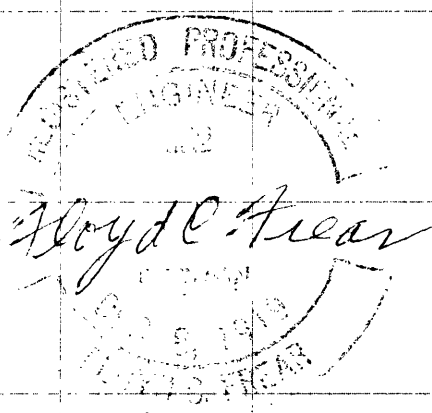
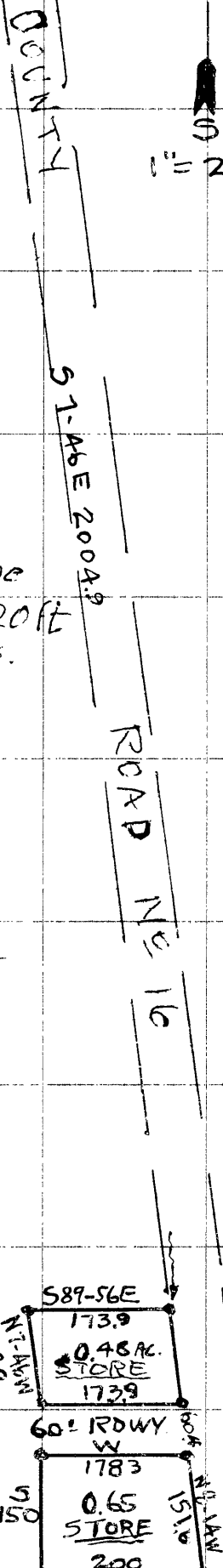
9-8-1950 - J. C. Frear REG. ENG'R # 352

DESCRIPTION FOR STORE PROPERTY

Beginning at a pt. on the W. Line of Co. Rd. 16 which is S. 89°-31'E. 529.64 ft. & S. 7°-46'E. 2004.9 ft. distant from the Corner Secs. 2-3-10-11 T. 28-6, Thence S. 7°-46'E. 120 ft. along Rd. 16 Thence N. 89°-56' W. 173.9 ft. along the North Line of a 60 foot roadway, Thence N. 7°-46' W. 120 ft Thence S. 89°-56'E. 173.9 ft. to the place of beg. and cont. 0.48 Ac. of land more or less all in Sec. 11 above Twp. & Range.

Note N.W. Cor. above Tract 3' drill steel
 N.E. " " " $\frac{3}{4}$ " x 30" G. I. Pipe
 S.E. " " " 1" x 30" " "
 S.W. " " " " " "

Oct. 1955 J. C. Frear REG. ENG'R # 352



East 620
 SCHOOL DIST. 5