

FILED
RECEIVED

DEC 12 1955

COUNTY SURVEYOR
DOUGLAS COUNTY, ORE.

COUNTY SURVEYOR'S OFFICE
DOUGLAS COUNTY, OREGON.
SURVEY SHOWING
PROPERTY OF PAUL K. CARR IN CITY
OF GLENDALE, OREGON.

GEO. J. WENDEROTH, DEPUTY.

DEC. 7, 1955

SCALE 1"=100ft.

PACIFIC

AVE.

ST.

WILLIS AVE.

720.0

SCHOOL
PROPERTY

S.24°W. FIRST

MONTGOMERY

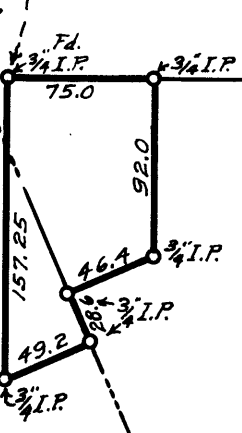
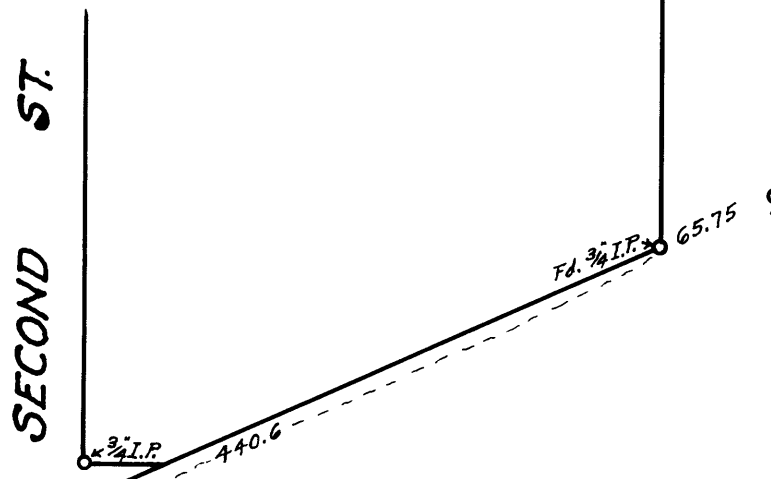
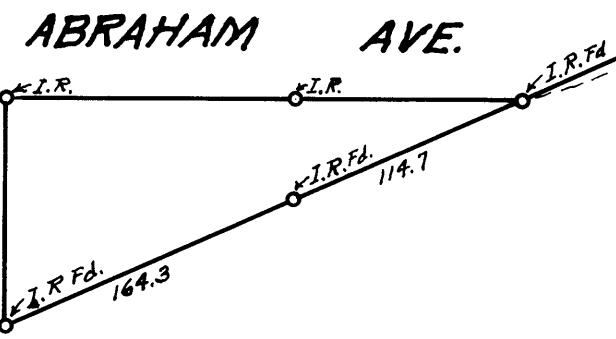
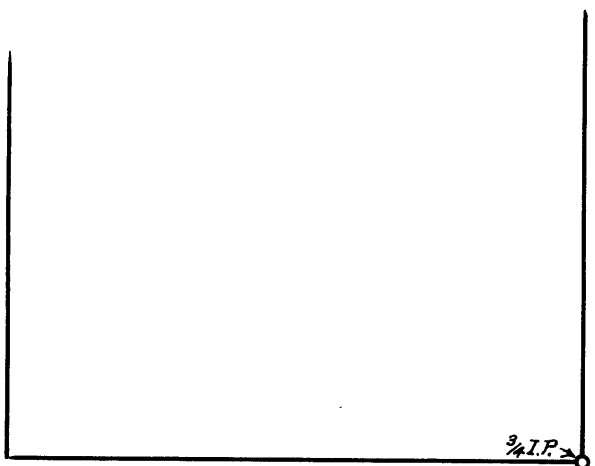
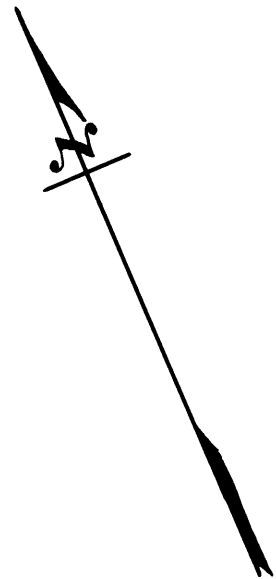
AVE. S.66°E.

SECOND
ST.

ABRAHAM AVE.

I.B. Fd.

Section Line



REGISTERED
OREGON
LAND SURVEYOR

Geo. J. Wenderoth

MARCH 10, 1944
George J. Wenderoth
5

COUNTY SURVEYORS FILE DATA
DO NOT REMOVE FROM OFFICE