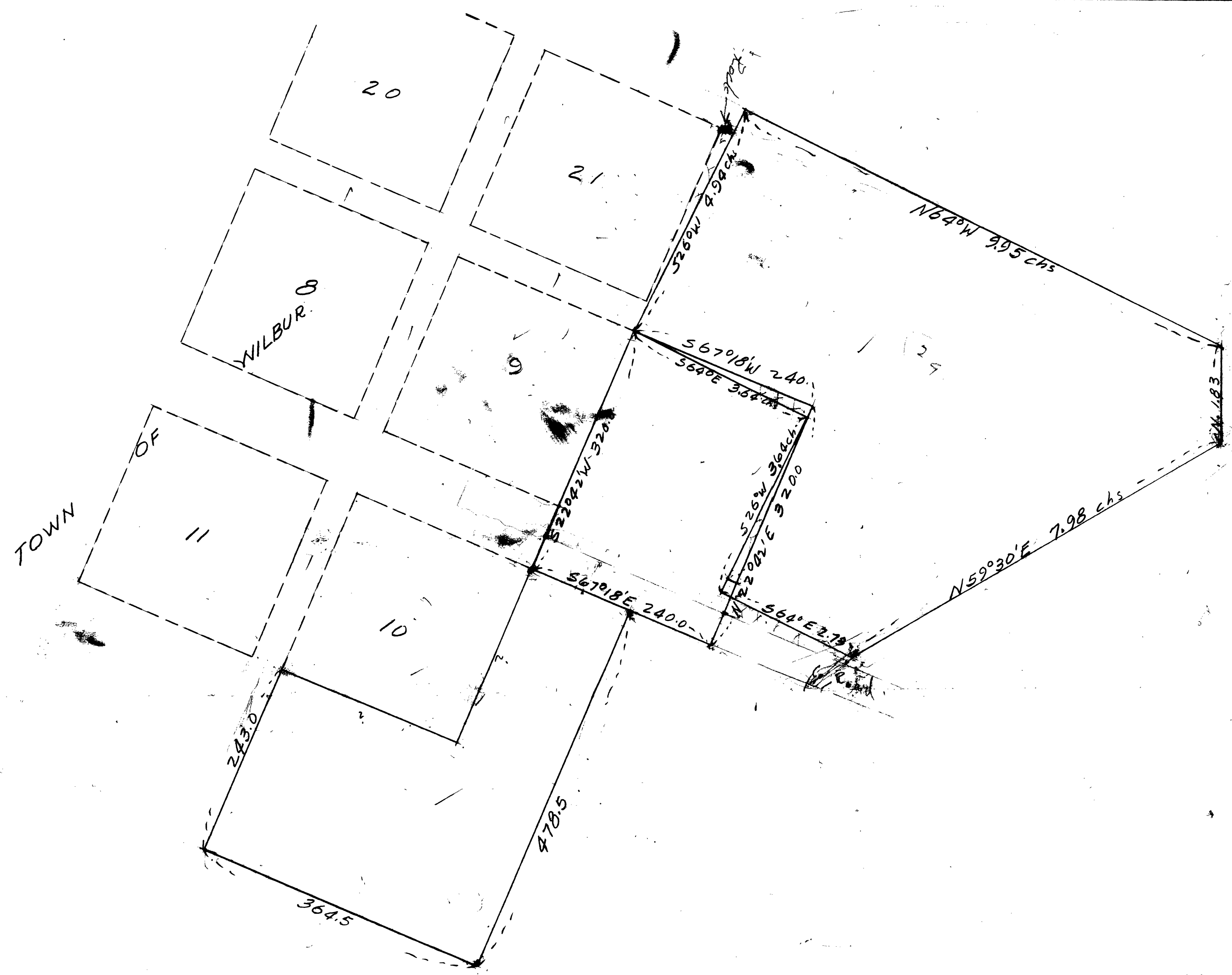


A.R. Evans 8/27/47



MAP OF RUSSELL PROPERTY
 TOWN OF WILBUR, SEC. 18, T26S, R5W
 DOUGLAS COUNTY, OREGON
 OFFICE OF BEN B. IRVING
 COUNTY SURVEYOR
 PLATTED BY A.R. EVANS, 8-27-47
 SCALE, 1" = 100'

Note: This map was platted from information furnished by Mr. H.S. Baird, who is purchasing the Russell property. No survey was made, and the accuracy of the map can only be that of the information furnished

COUNTY SURVEYOR'S FILE DATA
 DO NOT REMOVE FROM OFFICE

C.S. 47/18

CS FILE FOLDER

CONTAINS

MORE

INFORMATION