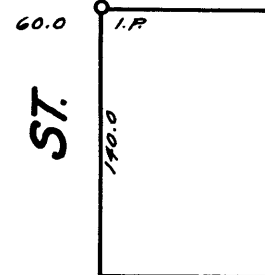
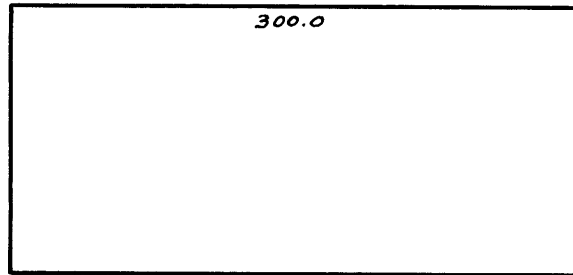
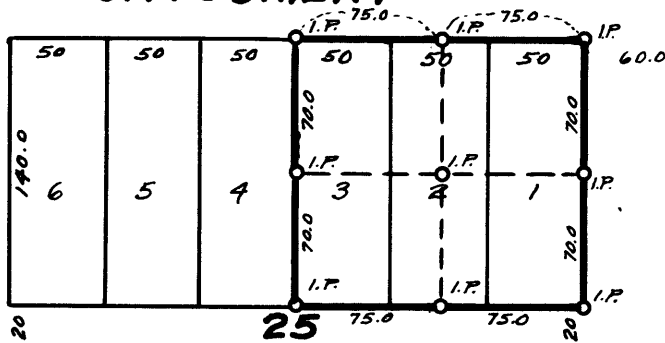


ST.

ST.

MONTGOMERY

AVE.

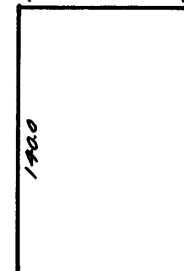
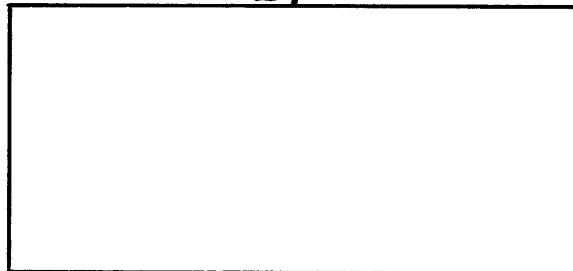
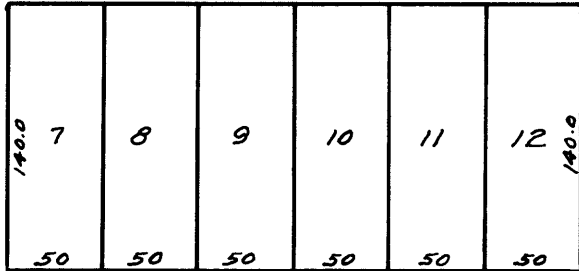


25

24

23

8TH



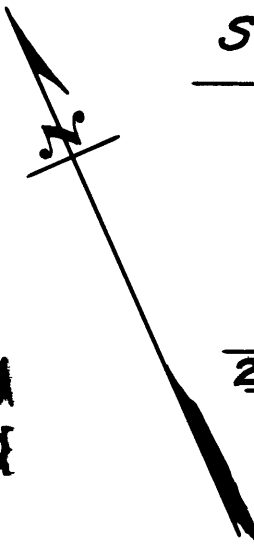
7TH

SOL

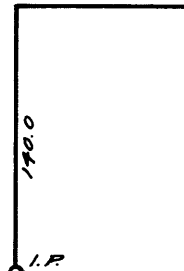
60.0 AVE.

COUNTY SURVEYOR'S OFFICE
DOUGLAS COUNTY, OREGON.

SURVEY FOR
E. WILLIAM NELSON
LOTS 1-2-3, BLOCK 25, CITY OF GLENDALE
GEO. J. WENDEROTH, DEPUTY. SEPT. 1955
SCALE 1" = 100 FT.



6TH



29

30

COUNTY SURVEYORS FILE DATA
DO NOT REMOVE FROM OFFICE

REGISTERED
OREGON
LAND SURVEYOR

Geo. J. Wenderoth

MARCH 10, 1944
George J. Wenderoth
5

MAURICE

AVE.